

St Lawrence Corridor

Collaboration

Joe Hendriks
Sept 11, 2019

BACKGROUND

- **Significant Industry & job loss over the past couple of decades**
- **Consultations held with concerned business people and political leaders**
- **Main conclusion – need to collaborate as a region**
- **Formed the St Lawrence Corridor Economic Development Commission (SLCEDC) in 2017**
- **SLCEDC “the Corridor” is represented by 7 municipalities**
- **BoD – mayor plus one industry rep. per municipality**
- **The SLCEDC is incorporated and has hired a commissioner.**

THE BOARD



AUGUSTA
Doug Malanka
Joe Hendriks



PRESCOTT
Brett Todd
Shelley Bacon



Leeds & Thousand Islands
Corinna Smith-Gatcke
George Horton



Front of Yonge
Roger Haley
Richard Marcoux



Elizabethtown/Kitley
Brant Burrow
Bob Anderson (VC)



**EDWARDSBURGH
CARDINAL**
Pat Sayeau
Brendan Bland



BROCKVILLE
Jason Baker
David Beatty (C)

SLCEDC MISSION

The St Lawrence Corridor Economic Development Commission is focused on the attraction of new industrial and commercial employers to the region to increase the quantity and quality of job opportunities for our residents along with assisting our existing businesses to expand.

INDUSTRIAL FOCUS



Advanced
Manufacturing



Warehouse
Logistics



Agri/Wood
Biomass



Chemical
Manufacturing

**REGION
FIRST
COLLABORATE
PRINCIPLED
PERFORMANCE
BASED
CONSULTIVE**

Corridor Collaboration Partners

- 7 Corridor Townships
- Bioindustrial Innovation Canada (BIC)
- Local/Regional EcDev
- Ontario East Wood Center
- Invista Maitland
- Corridor Companies/Employers
- St Lawrence College
- Port of Johnstown

Hon. Steve Clark

(MPP – Leeds Grenville Thousand Islands and Rideau Lakes)

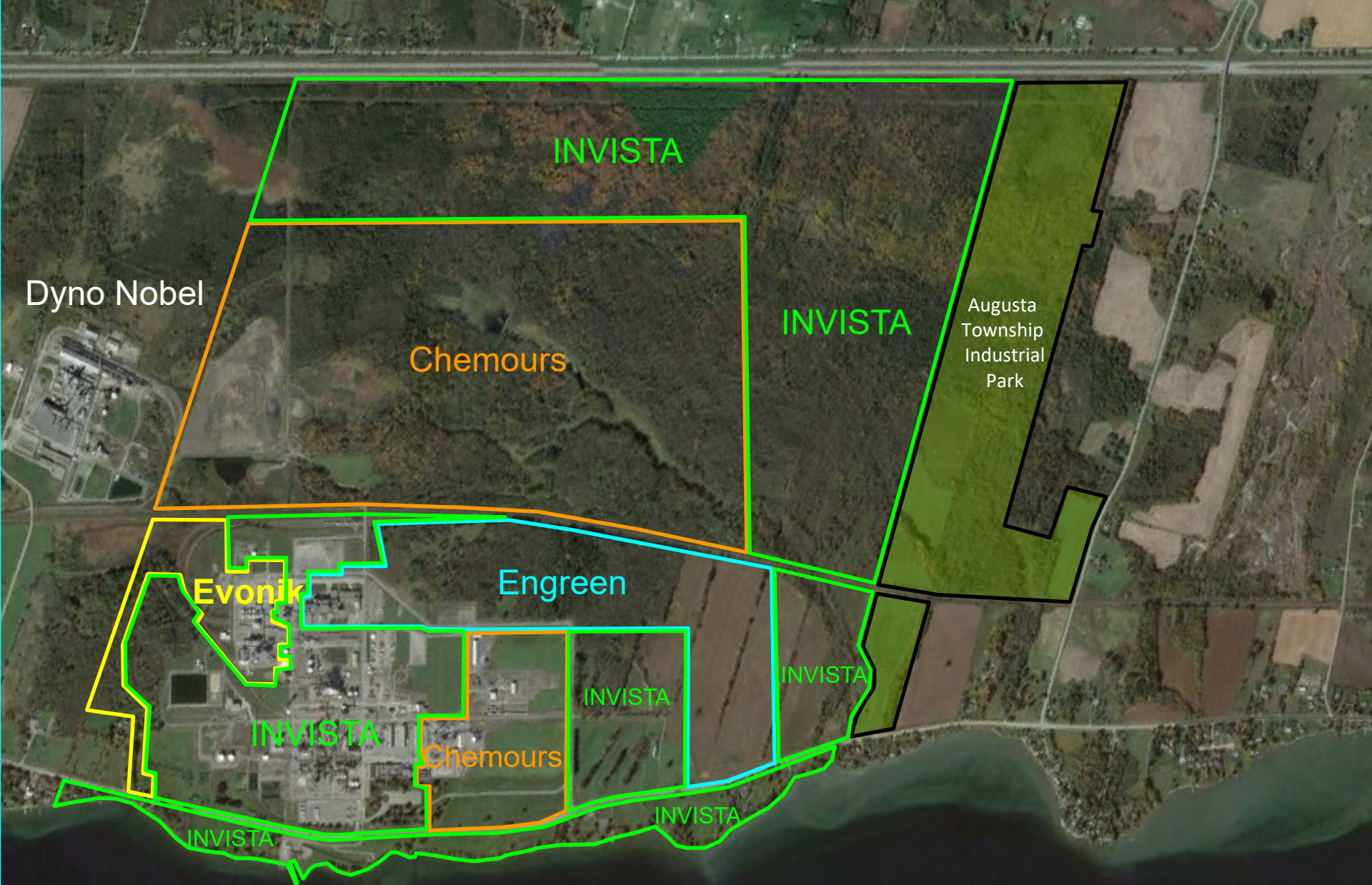
“The key to capitalize on our potential is the decision by the partners to take a cooperative approach in their attraction and retention efforts by coming together to form the Commission. Your commitment to collaboration is a game changer

Maitland Industrial Park

Maitland has a well-established 1,500-acre industrial chemical cluster that consists of the globally recognized chemical companies of Invista Canada and Evonik Industries

- Energy (Electricity, Steam, Nat Gas)
- 2 Cogens
- Water
 - Cooling
 - Fire suppression
 - Process
 - Potable
 - De-min
- Wastewater treatment
- Compressed Air, Nitrogen, hydrogen
- Excess Land
- High speed telecommunications
- Laboratory services
- Transportation:
 - Highway 401
 - CN Rail lines
 - 2 International bridges
 - Nearby Deepwater Port





Dyno Nobel

INVISTA

Chemours

INVISTA

Augusta
Township
Industrial
Park

Evonik

Engreen

INVISTA

Chemours

INVISTA

INVISTA

INVISTA

INVISTA

LOCATION, LOCATION, LOCATION

INTERNATIONAL
BRIDGE TO USA

PORT OF JOHNSTOWN

CN / CP RAIL

INTERNATIONAL
BRIDGE TO USA

401 / 416
INTERCHANGE





Port of Johnstown

Ontario, Canada



Toronto

→ 3.5 hours

Ottawa

→ 1 hour

Montreal

→ 2 hours

U.S.A.

→ 10 minutes

New York City

→ 6.5 hours

Eastern Ontario's Premier Port

Tel.: 613.925.4228

www.portofjohnstown.com

generalinfo@portofjohnstown.com



[@portofjohnstown.com](https://twitter.com/portofjohnstown)

PORT OF JOHNSTOWN SERVICE AREA



Bioindustrial Innovation Canada

Creating jobs and economic value sustainably



Ontario East Municipal Conference
September 11, 2019

A.J. (Sandy) Marshall
Executive Director,
Bioindustrial Innovation Canada
Sarnia, Ontario

Bioindustrial
Innovation Canada
A Sustainable Chemistry Alliance

Bioindustrial Innovation Canada

Accelerating commercialization of clean technologies

Vision:

Creating jobs and economical value sustainably for Canada

Mission:

Bioindustrial Innovation Canada provides critical strategic investment, advice and services to business developers of clean, green and sustainable technologies. Our expertise in commercialization builds a stronger Canada.

Bioindustrial Innovation Canada

Strategic Pillars

Cluster Builder:

- *Build a strong hybrid cluster in Sarnia-Lambton*
- *Create strong partnerships with Colleges and Universities*
- *Integrate cluster model into additional Canadian communities*

Critical Strategic Investment Fund:

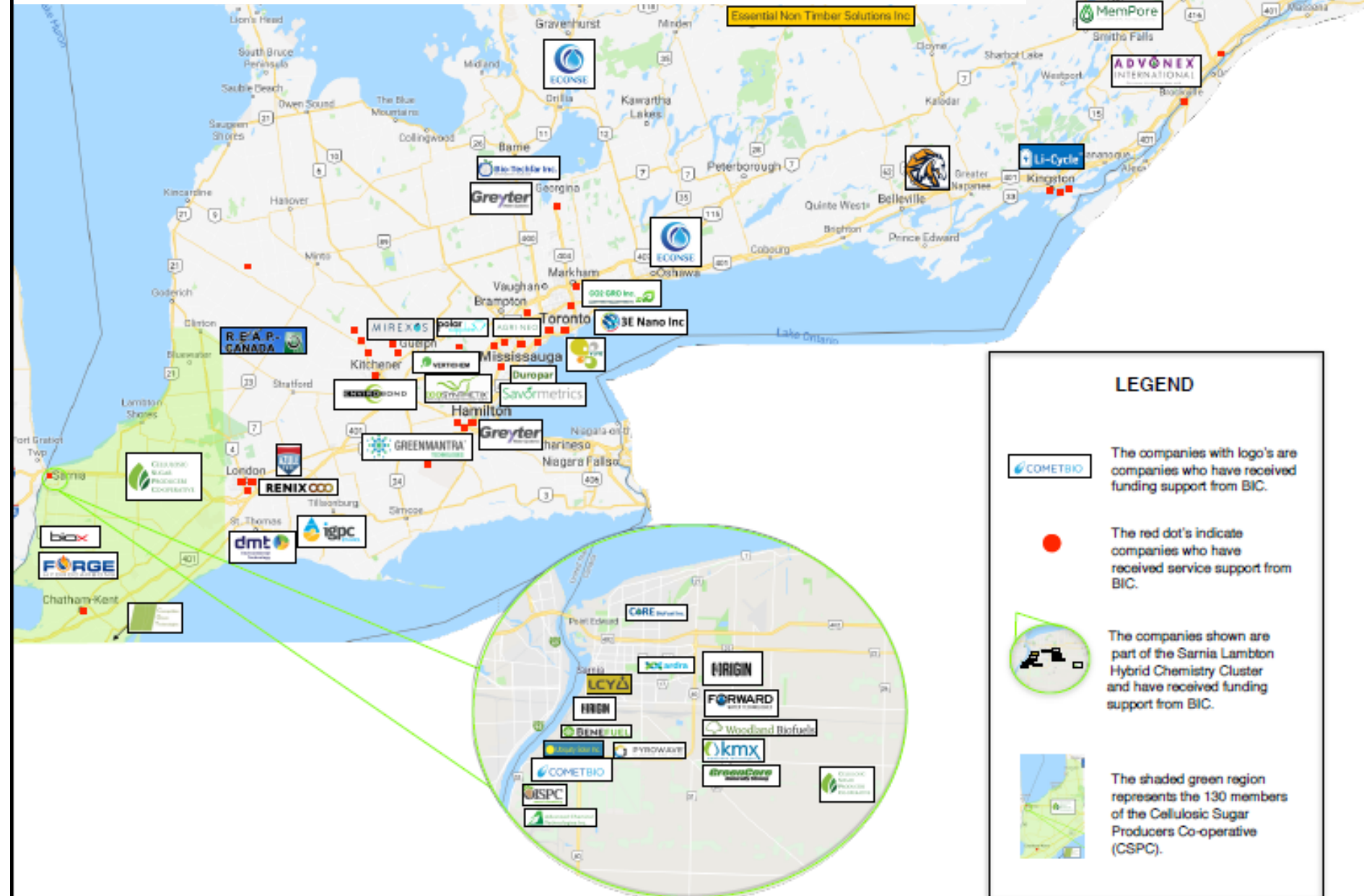
- *Raise risk capital for clean, green and sustainable startups*
- *Invest in start up companies with high potential for success*
- *Use BIC talent and connectivity to accelerate success and profitability*

Strong Leader for Commercialization:

- *Provide commercialization advise and services*
- *Increase awareness and understanding of successes*
- *Provide leadership for sustainability (LCA, GHG reduction, water reduction and quality)*

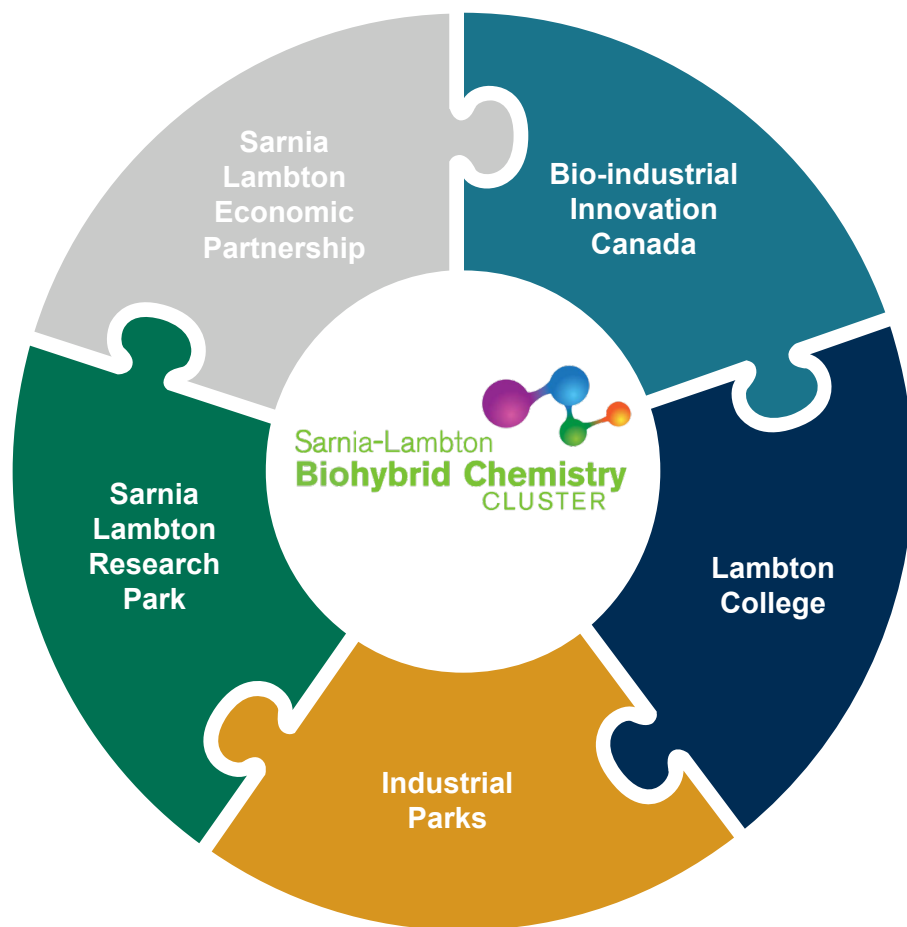
Bioindustrial Innovation Canada

Supporting SMEs across Southern Ontario



Sarnia-Lambton Hybrid Chemistry Cluster

Supported through a collaborative ecosystem



Sarnia-Lambton Economic Partnership:

Community and municipality economic driver providing local contact

Sarnia-Lambton Research Park:

Providing assets (laboratory and pilot plant space) for business incubation

Lambton College:

Providing access to applied research capability and highly qualified people

Bioindustrial Innovation Canada:

Business accelerator providing critical investment, advice and services

Industrial Parks:

Access to cost effective infrastructure and services for commercialization

Bioindustrial Innovation Canada

The Ontario Bioindustrial Innovation Network (OBIN)

Support a cluster in the Eastern Ontario

Provide its advice, services, knowledge and experience and apply it regionally to develop a second high-performing cluster that generate jobs, create economic value and build clean technology companies with reduced environmental impact.

This includes utilizing COMM SCI projects and investments as tools for growth

Build stronger hybrid chemistry value chains in southern Ontario by identifying and addressing value chain gaps

Accelerate development of clean economic growth and support competitive technology companies to grow to global scale by building robust raw material supply chains, by leveraging regional and global partners along the value chain to strengthen market pull and by removing barriers to commercialization through COMM SCI projects

Invest in emerging low-carbon companies

Assist businesses to commercialize, increase scale and become world-class players through the SCA Fund with COMM SCI investments

Thank You

Website: <http://www.bincanada.ca/>

Twitter: @BICSarnia

A.J. (Sandy) Marshall
Executive Director
Bioindustrial Innovation Canada
sandym@bincanada.ca
Phone: (519) 402-3441

