

What Conservation Authorities Can Do For You!

Presented on Behalf of Eastern Ontario's Conservation Authorities



Raisin Region
Conservation Authority



Mississippi Valley
Conservation Authority



RIDEAU VALLEY
CONSERVATION AUTHORITY



Crowe Valley
Conservation



SOUTH NATION
CONSERVATION
DE LA NATION SUD



CATARAQUI REGION
CONSERVATION AUTHORITY



Quinte
CONSERVATION



OTONABEE
CONSERVATION





Welcome!

- Intro to Conservation Authorities
- Supporting Our Member Municipalities
- Working With Our Watershed Residents
- Looking Ahead

Conservation Authority Basics

- Each Conservation Authority is a separate entity, formed under the *Conservation Authorities Act*
- Area of jurisdiction is based on watersheds
- Serve Eastern Ontario south of line joining Lindsay & Arnprior
- 36 CAs serve 90% of Ontario's population



Conservation Authority Basics

- Programs reflect partnership support and local needs
- Administered by a board of municipally appointed members
- Boards: administrative procedures, strategic plan, budget/audit
- Funded by municipalities, government grants, fees and other sources
- Collaborative network: Conservation Ontario



Roles

- CA Act is enabling

A program designed to further the conservation, restoration, development and management of natural resources

(Section 20 excerpt)

- Stems from issues experienced (e.g. poor water quality, fluctuations in water supply, flood damage and life loss) and lack of appreciation of inter-relationships in nature

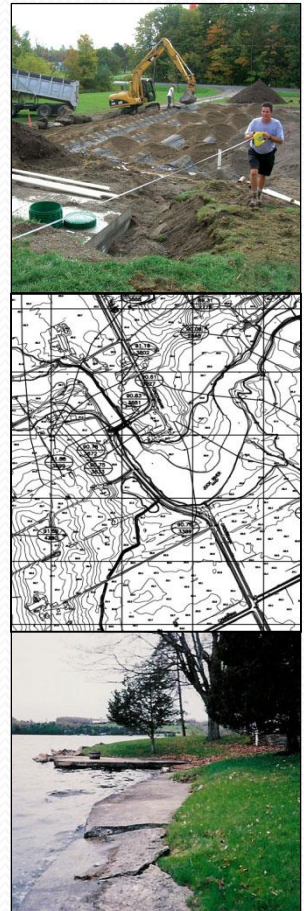
Roles

- **Delegated Roles** – which we all do
e.g. flood management, plan review
- **Service Delivery Roles** – which some do
e.g. tree planting, grant programs
- **Partnerships**
local resource management program
dependent on support & need
- **Resource Management Organization**
e.g. commenting body, landowner



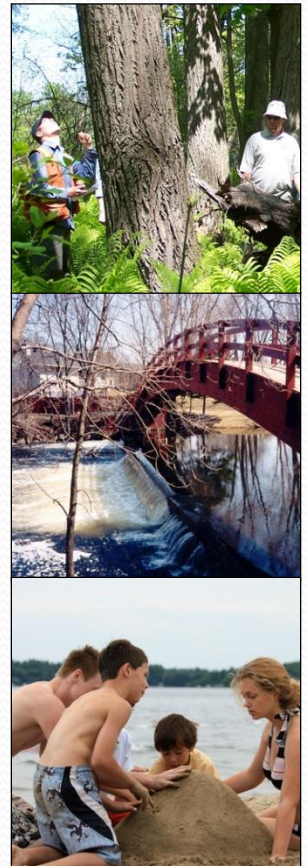
Our Work and Municipal Linkages

- **Measure/Monitor** (water levels/quality)
 - emergency measures
- **Plan** (regional groundwater, natural heritage)
 - official plans, attracting waterfronts
- **Watershed Studies** (floodplain mapping, stormwater/ice plans)
 - official plans, zoning by-laws, design standards, GIS
- **Land Use Applications** (technical advice, permits)
 - address hazards, retain attracting features/functions



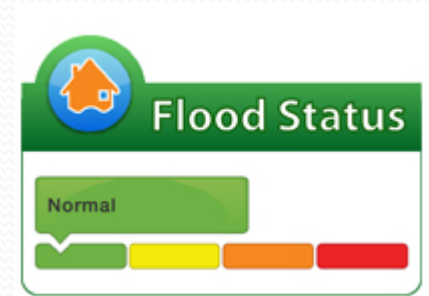
Our Work and Municipal Linkages

- **Ecological Lands** (wetlands, flood prone)
 - intrinsic greenspace
- **Education** (curriculum based, workshops, report cards)
 - informed residents/next generation
- **Stewardship** (habitat, drainage, waterfront)
 - engaged residents, 'communities in bloom'
- **Recreation Lands** (trails, picnic areas)
 - supplement parks



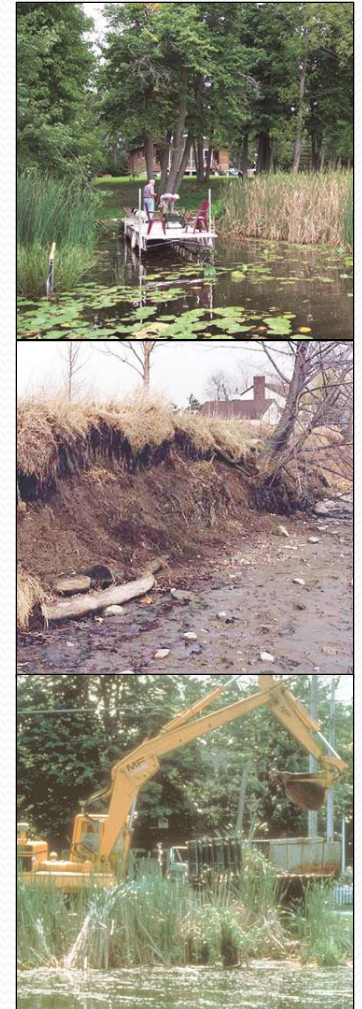
Flood Forecasting & Warning

- Stream flow/lake level + ice cover + dam settings
- Snowpack + ground frozen
- Weather forecast (precipitation, temperature, wind)
- System response
- Computer model + thresholds
- Susceptible areas
- Bulletin
- Municipalities respond



Plan Review

- Required to comment per Planning Act/Regulation
- MOU for technical advisory service to municipalities
- Offer watershed perspective and “in-watershed” expertise
- Few OMB hearings/appeals – reflects effort to assist applicants



Plan Review:

- Screen applications (waterfront, wetlands)
- Charge fee to applicant to cover cost
- Participate in pre-consultation; meet timelines
- Typically: natural hazards, natural heritage, water quality, EIS, stormwater, hydrogeology
- Includes heads-up on CA Regulation applicability/aspects

Program Aims:

- Promote sustainable watersheds where people can live, work and play
- Promote safety from natural hazards
- Provide places to engage in active lifestyles



We Are Valued Partners:

- Approachable, adaptable
- Informative, science-based
- Practical
- Preventative, solutions





Working With Watershed Residents

Understanding the Watershed

- Hunger for Knowledge
- Citizen Science Growing
- Have a Vision for the Future



Caring for the Watershed

- ◉ Lake Associations / Friends of Groups
- ◉ Lake / Watershed Planning
- ◉ Tree Planting / Woodlot Management
- ◉ Shoreline Naturalization
- ◉ BMPs / Clean Water Projects
- ◉ Septic Re-inspections
- ◉ Restoration / Habitat Creation
- ◉ Land Donation / Easements



Enjoying the Watershed

- Conservation Areas
- Education Opportunities & Programs
- Live, Work, Play





Conservation Authorities Moving Forward



Mandate of Conservation Authorities



To ensure the conservation, restoration and responsible management of Ontario's water, land and natural habitats through programs that balance environmental, human and economic needs

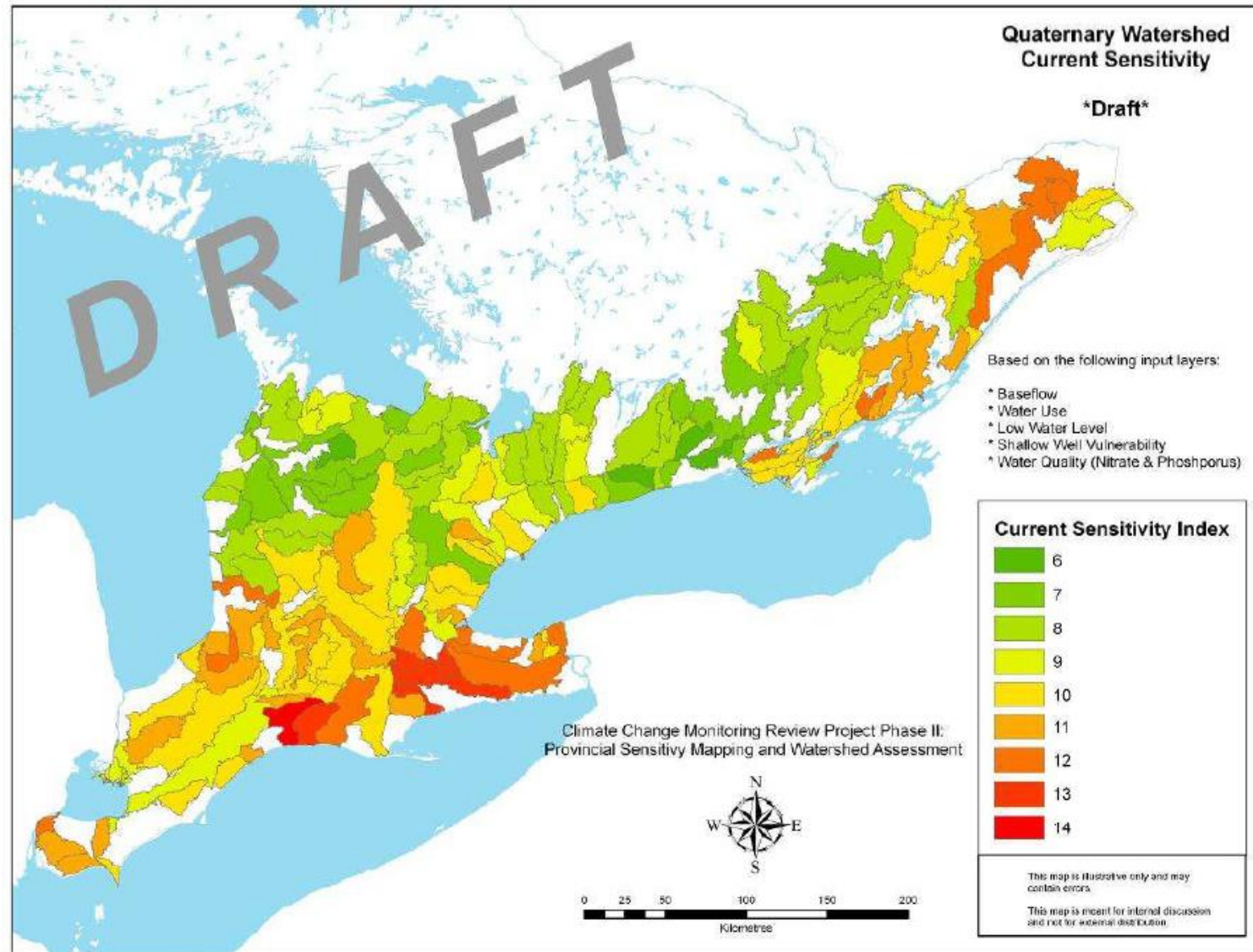
Our Climate is Changing



Impacts of Climate Change



Eastern Ontario is Sensitive to Climate Change



Provincially Significant Climate Change Stations

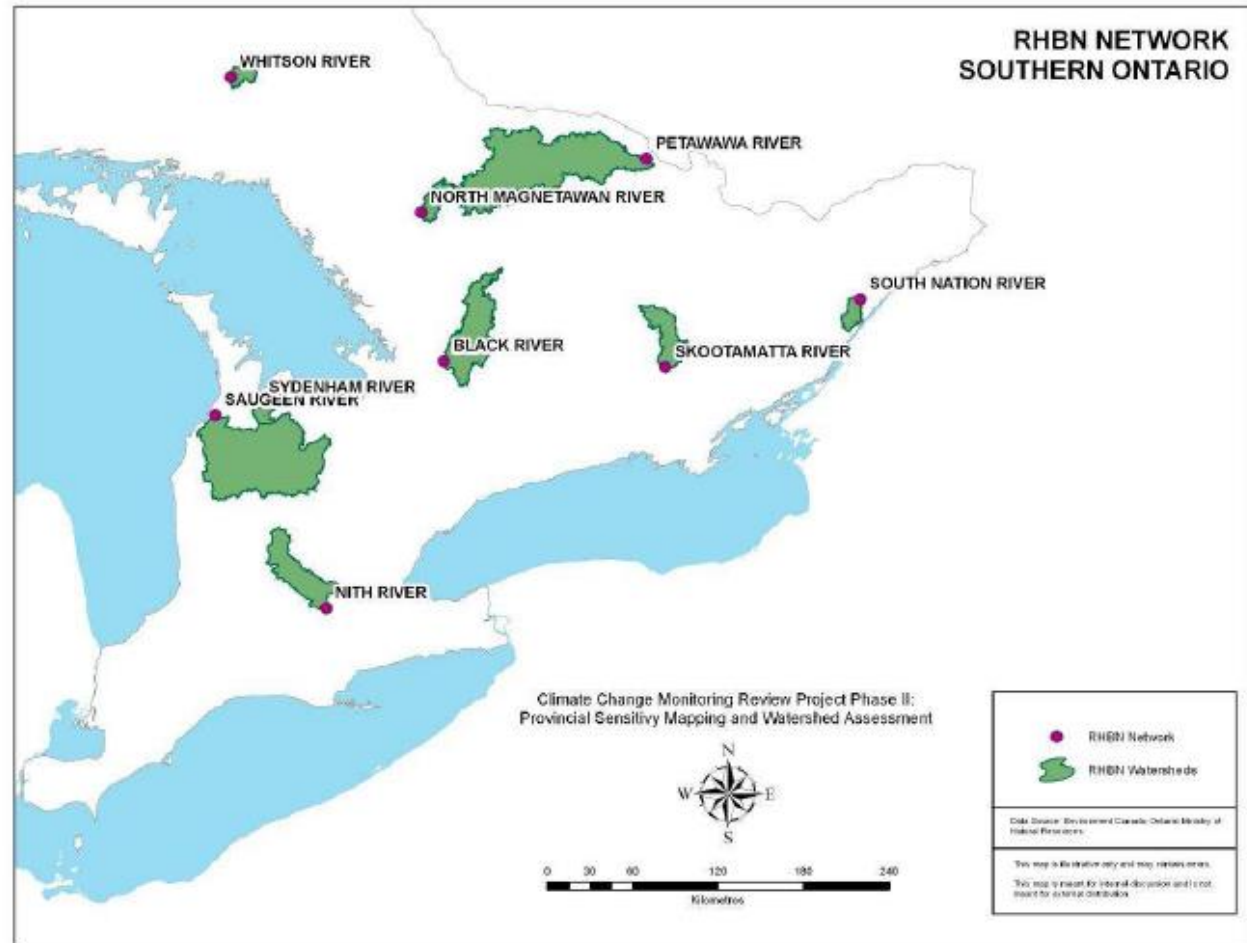
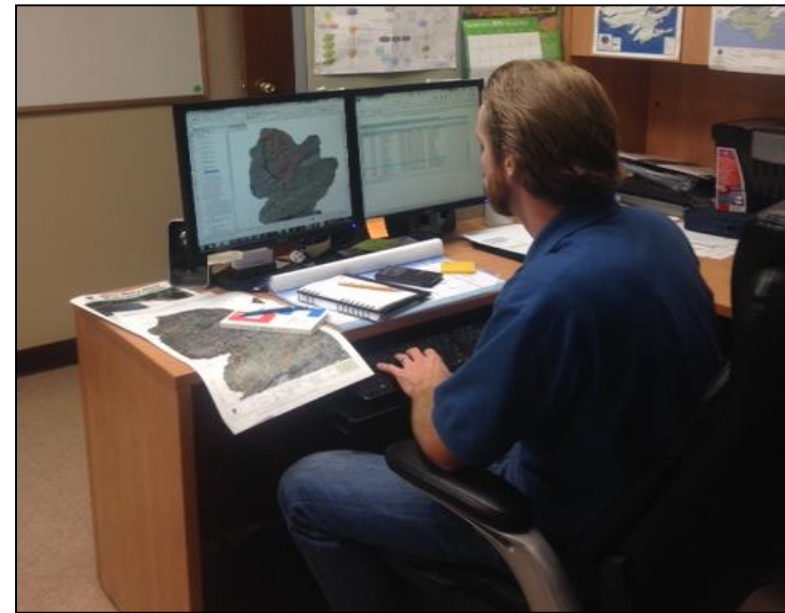
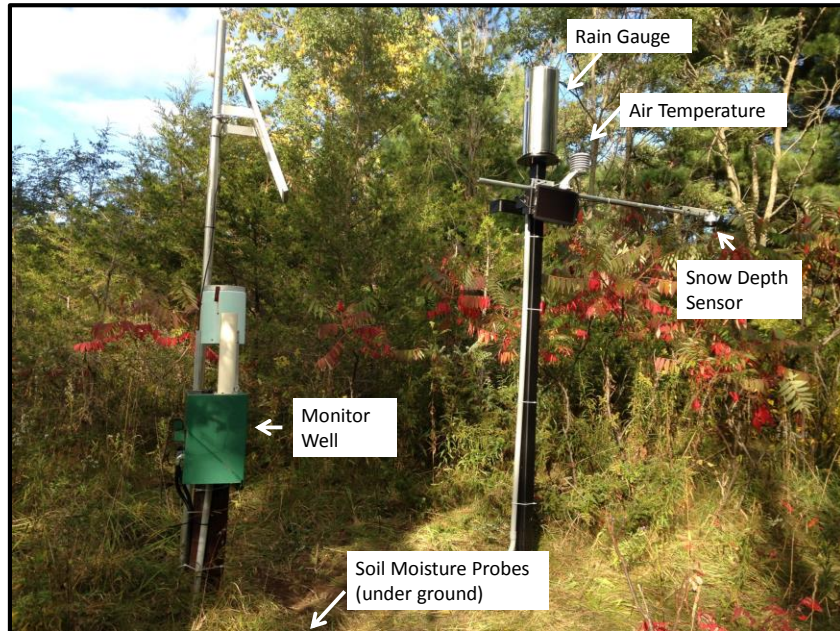
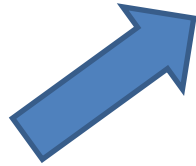


Fig. 3.2 Reference Hydrometric Station Locations in Southern Ontario

Future of Watershed Monitoring



Management & Sharing of Data

WISKI System **(Water Information System Kisters)**

- Integrated Database, Data Management and Data Acquisition system
- Administered and hosted by Quinte Conservation
- Joint collaboration by ten participating conservation authorities

Data Sources

- Surface Water & Base Flow
- Groundwater
- Snow Course
- Water Quality
- Meteorology
- Dam Operations

- Benthic (future)

Programs Served

- Climate Change
- Low Water
- Provincial Groundwater Monitoring Network
- Flood Forecasting
- Provincial Water Quality Monitoring Network
- Watershed Watchers
- Bay of Quinte Remedial Action Plan

- OBBN (future)
- OSAP (future)

Eastern CA Hub

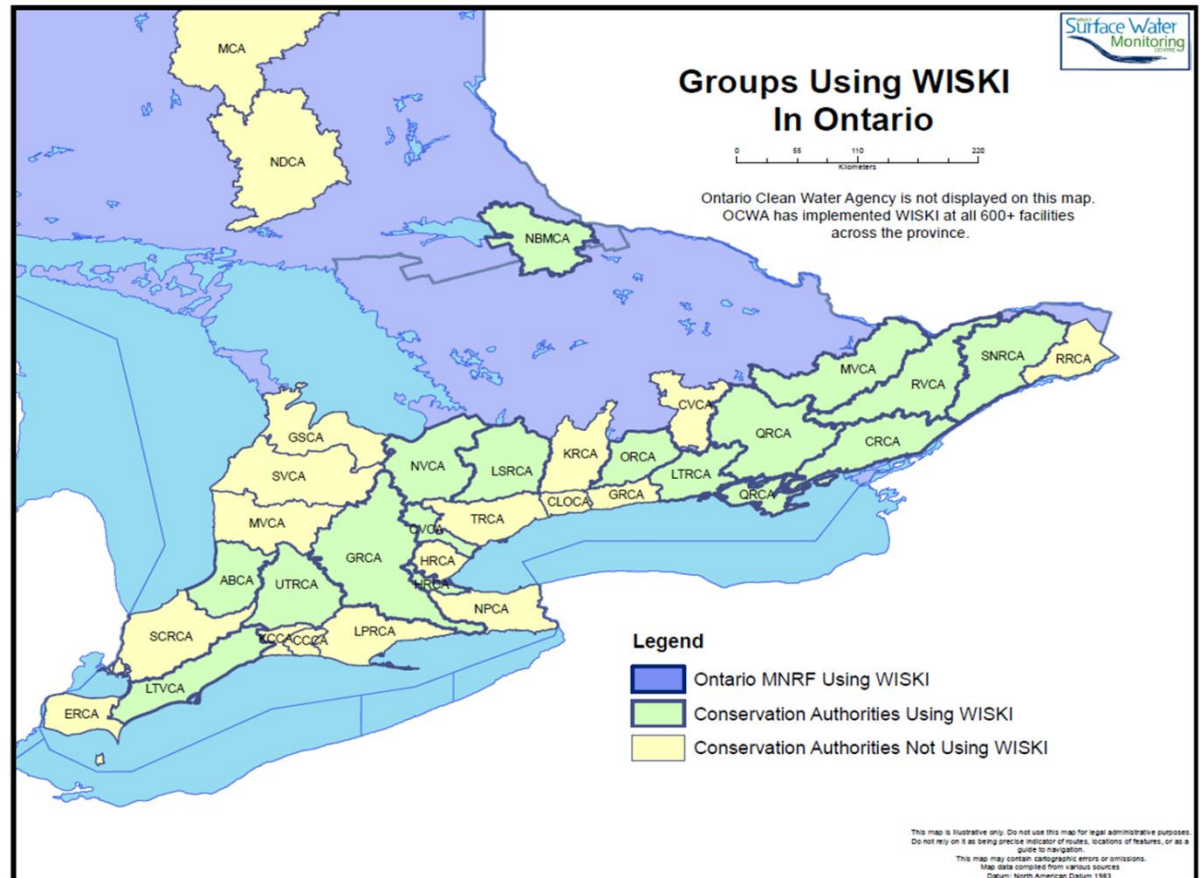


- Learn from each other
- If one CA takes initiative on a project everyone benefits
- Cost Savings
- Strength of each Conservation Authority is different
- Inter-agency compatibility

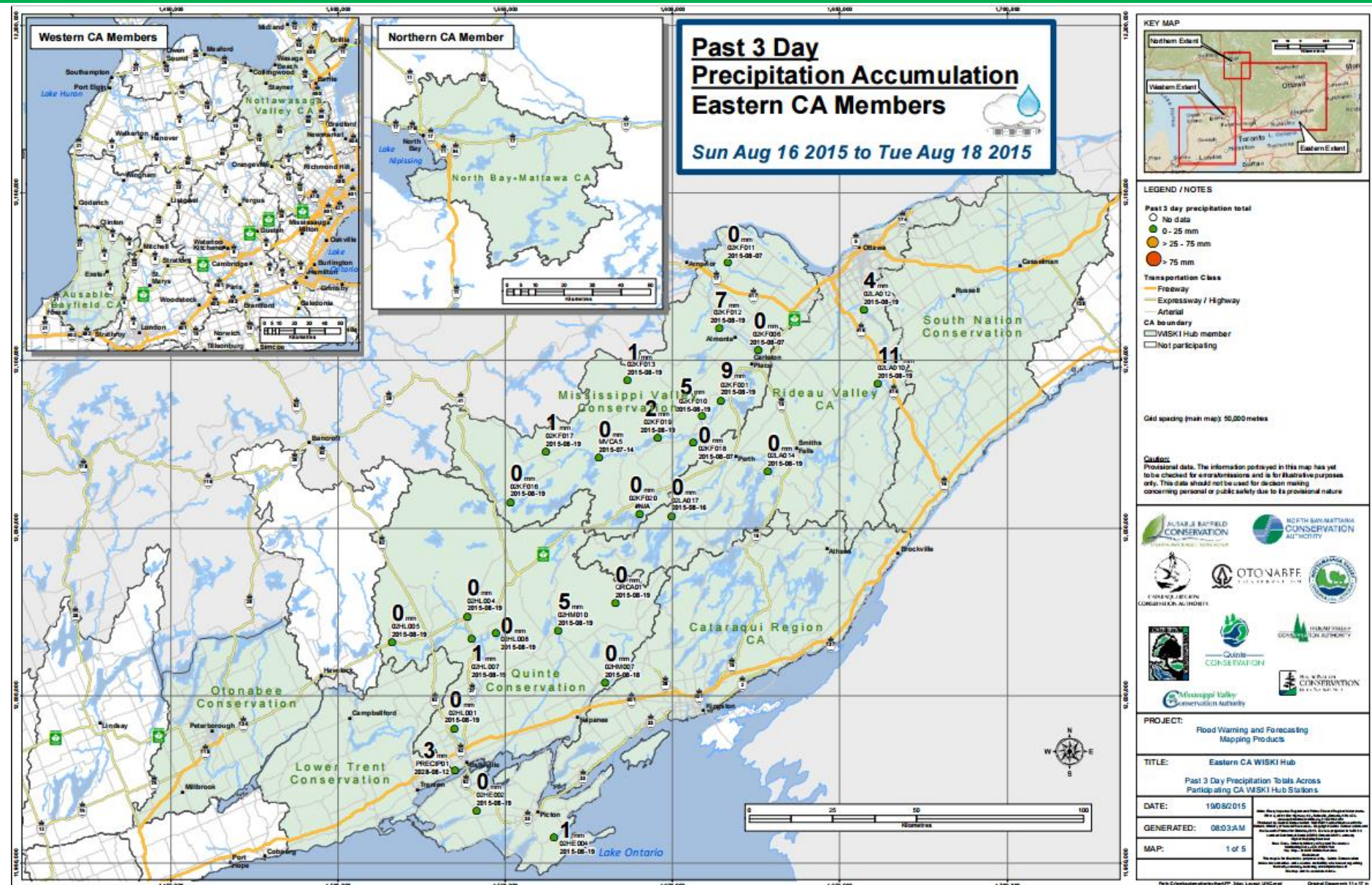


WISKI Hub Members

- Quinte Conservation
- Lower Trent Conservation
- Cataraqui Region
- Rideau Valley
- South Nation
- Mississippi Valley
- Otonabee Conservation
- North Bay – Mattawa
- Nottawasaga Valley
- Ausable Bayfield



Precipitation



Flood Protection

- Conservation Authorities provide services to reduce the threat of loss of life and property damage
- Flood warnings
- Flood forecasting
- We review development proposals in regulated areas



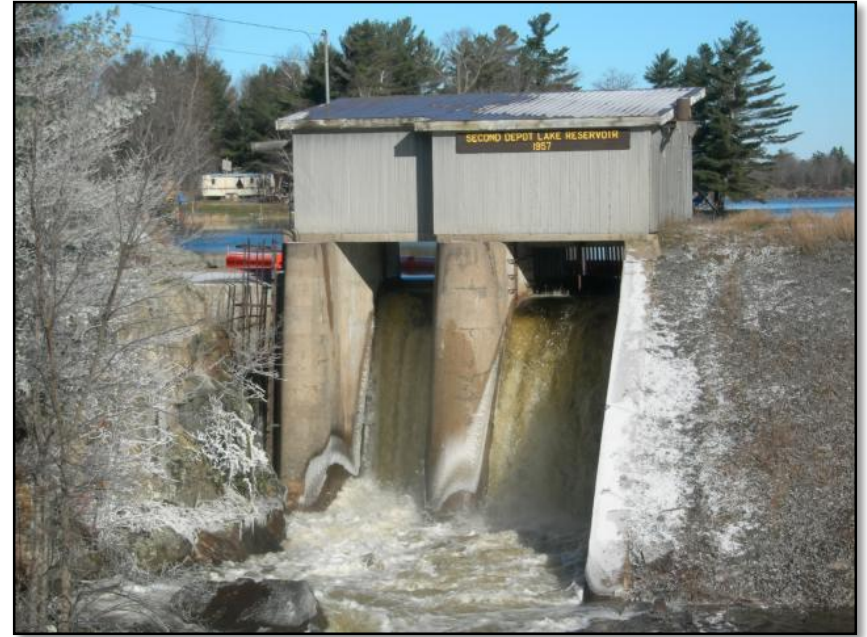
Regulations & Permits



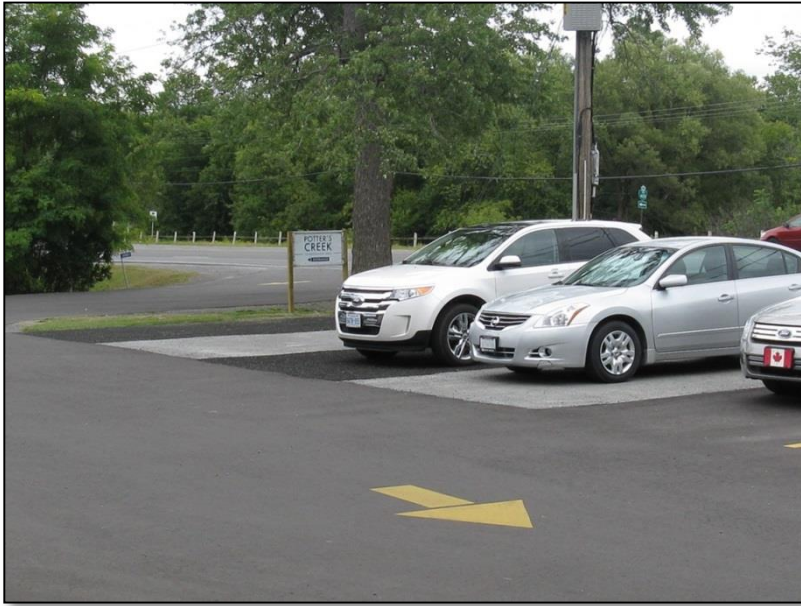
Drought Program



Dams & Reservoirs



Stormwater



Moving Forward

- Conduct complete and up to date monitoring of watersheds and climate indicators,
- Increase the understanding of climate change and what needs to be done to adapt and mitigate to it,
- Share information amongst other agencies and learn together,
- Integrate into existing programs to aid in informed decision making,
- Work towards having a healthy watershed to live in.

Our Most Precious Resource



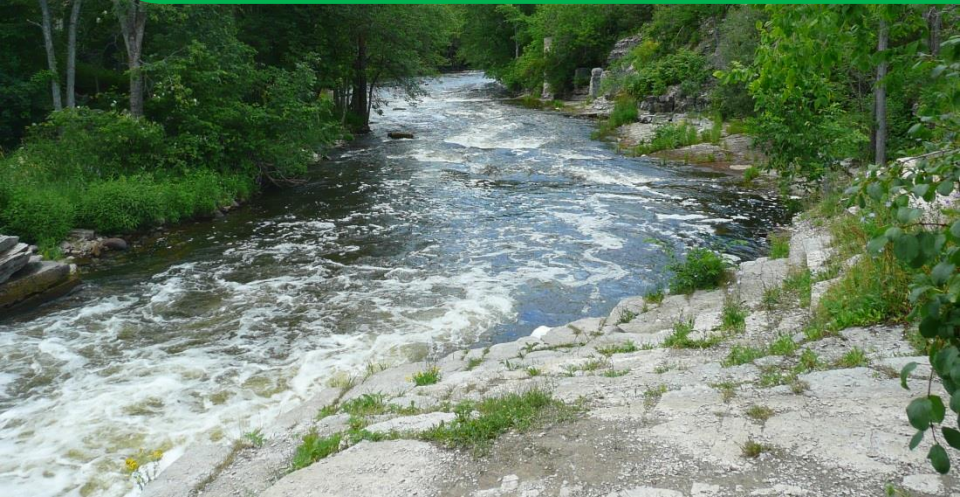
Water is our most precious resource.

We can live without oil or gas.

We cannot live without water.



Conservation Authority Act is Under Review



4 Key Priorities

- Confirm the CA Mandate
- Formalize and Expand the CA Working Relationship Across Provincial ministries
- Discuss the Governance Model in Relation to the Funding Model
- Sustainable Provincial Funding Formula that Captures and Reflects the Range of CA Programs and Services

Helpful Changes to the CA Act

- Bring the act up to date with the current municipal election timelines so that board members can be appointed for the entire term
- Change Section 28 to give Conservation Authorities the authority to issue stop work orders and removal of structures being built in the floodplain without permits