



cutting through complexity

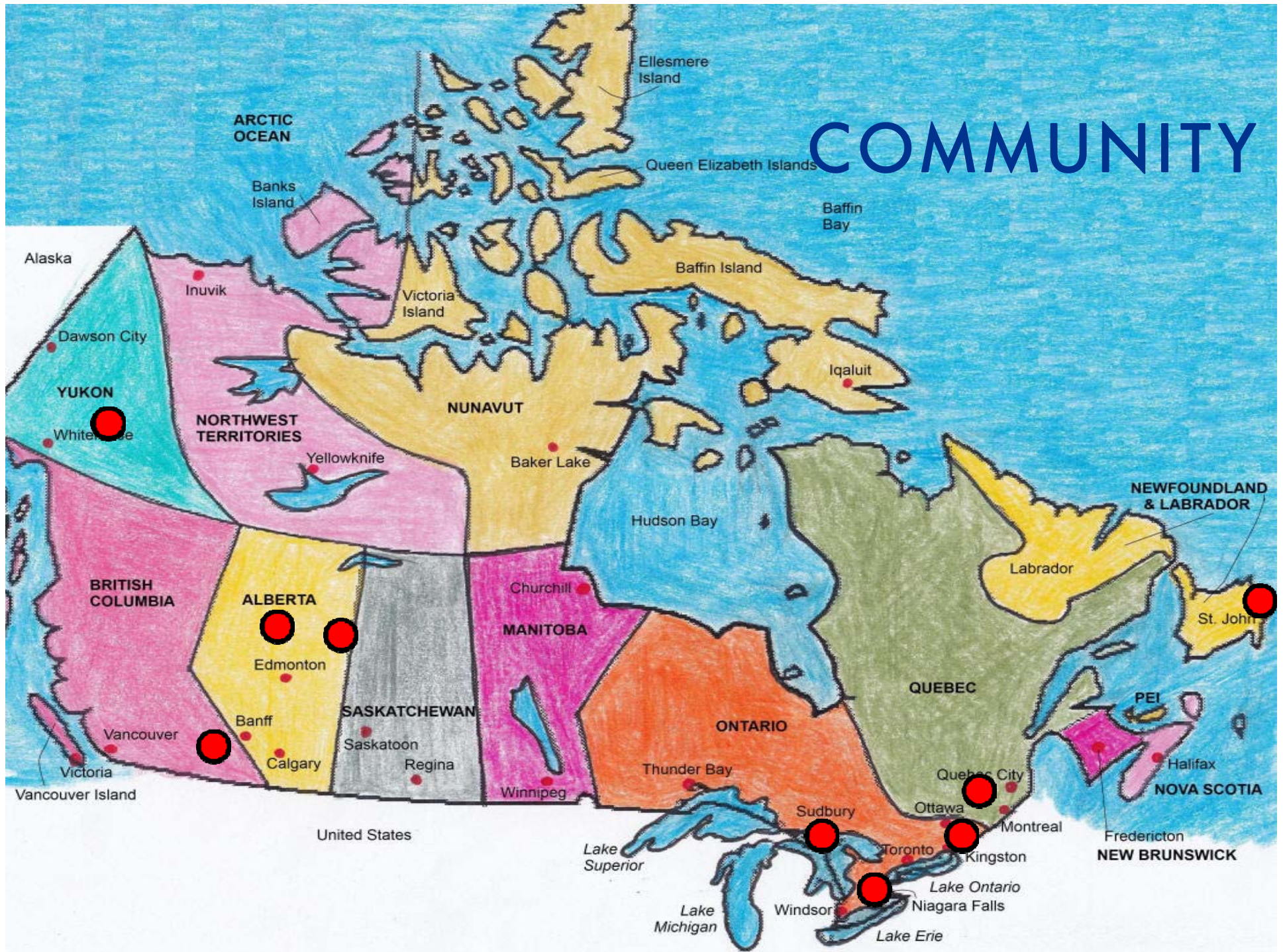
Rethinking Public Services into the Future

Ontario East Municipal
Conference
September 17, 2015

Bruce Peever
Senior Manager
Public Sector Advisory
September 17, 2015



COMMUNITY





Challenge Yourself To Think . . .

Beyond The Norm

NO





1 urbanization

2 rise of the individual

3 enabling technology

4 economic interconnectedness

5 public debt

6 economic power shift

7 climate change

8 resources stress

9 demographics



Urbanization |

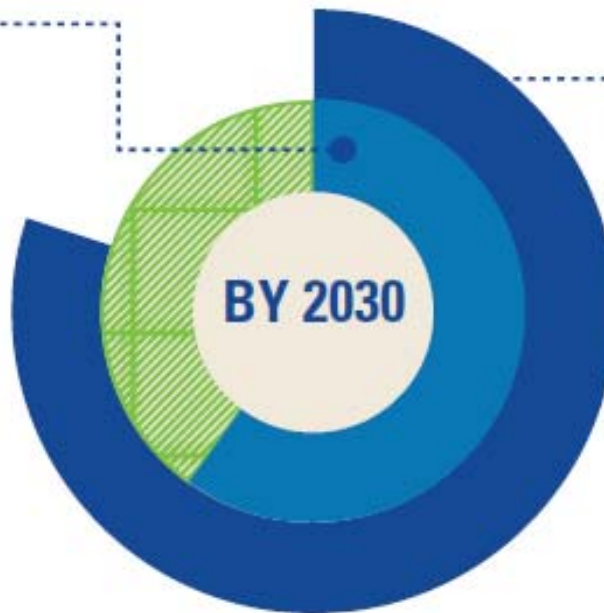
60% of the world's population will live in cities by 2030

60%

of the world's population will live in cities by 2030.

Up from 50% in 2013.¹³⁷

2013 50%
2030 60%



80%

of all urban growth in the next 20 years will take place in **Africa and Asia.**¹³⁸



Urbanization

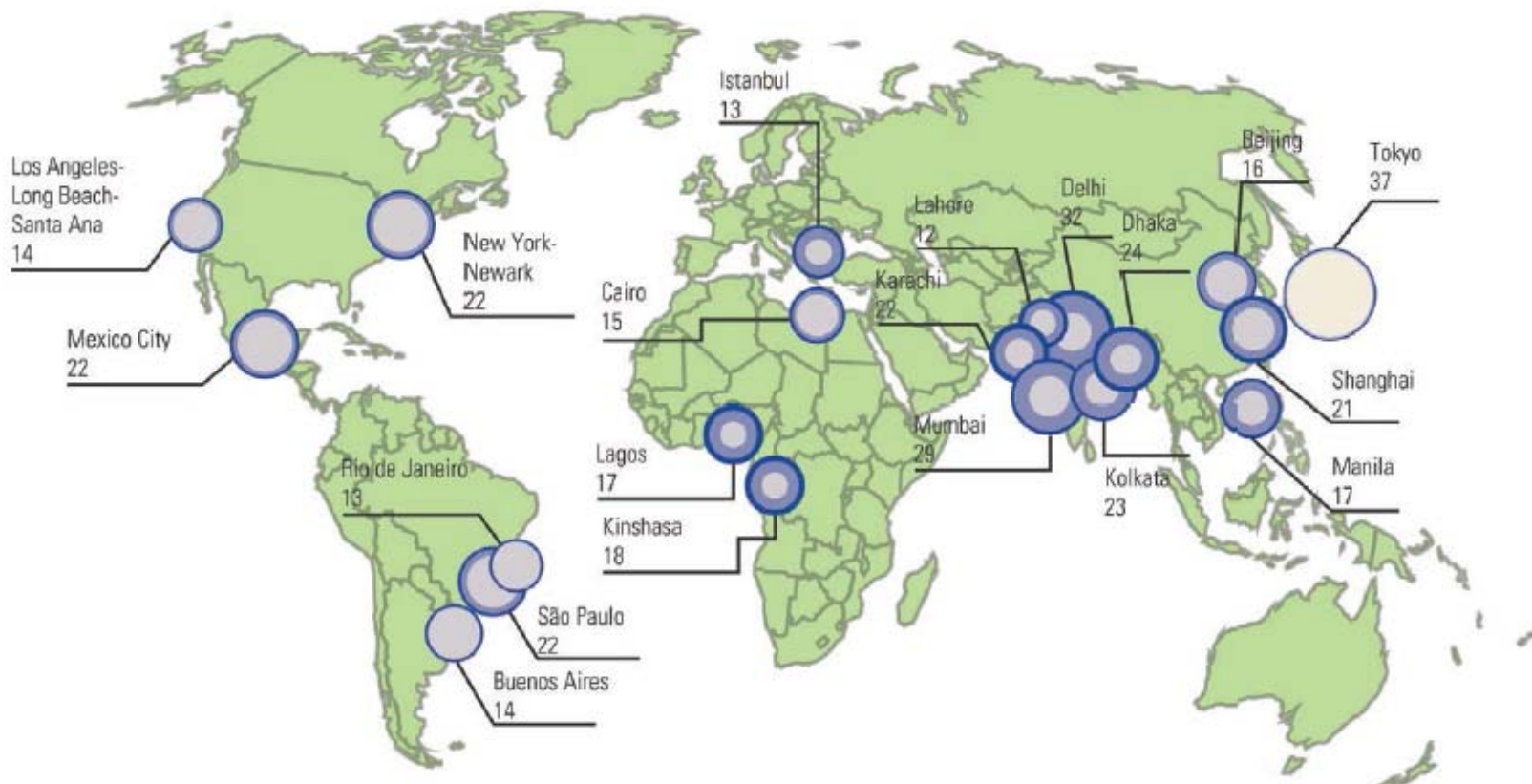
The 20 largest cities in 2030¹⁴³

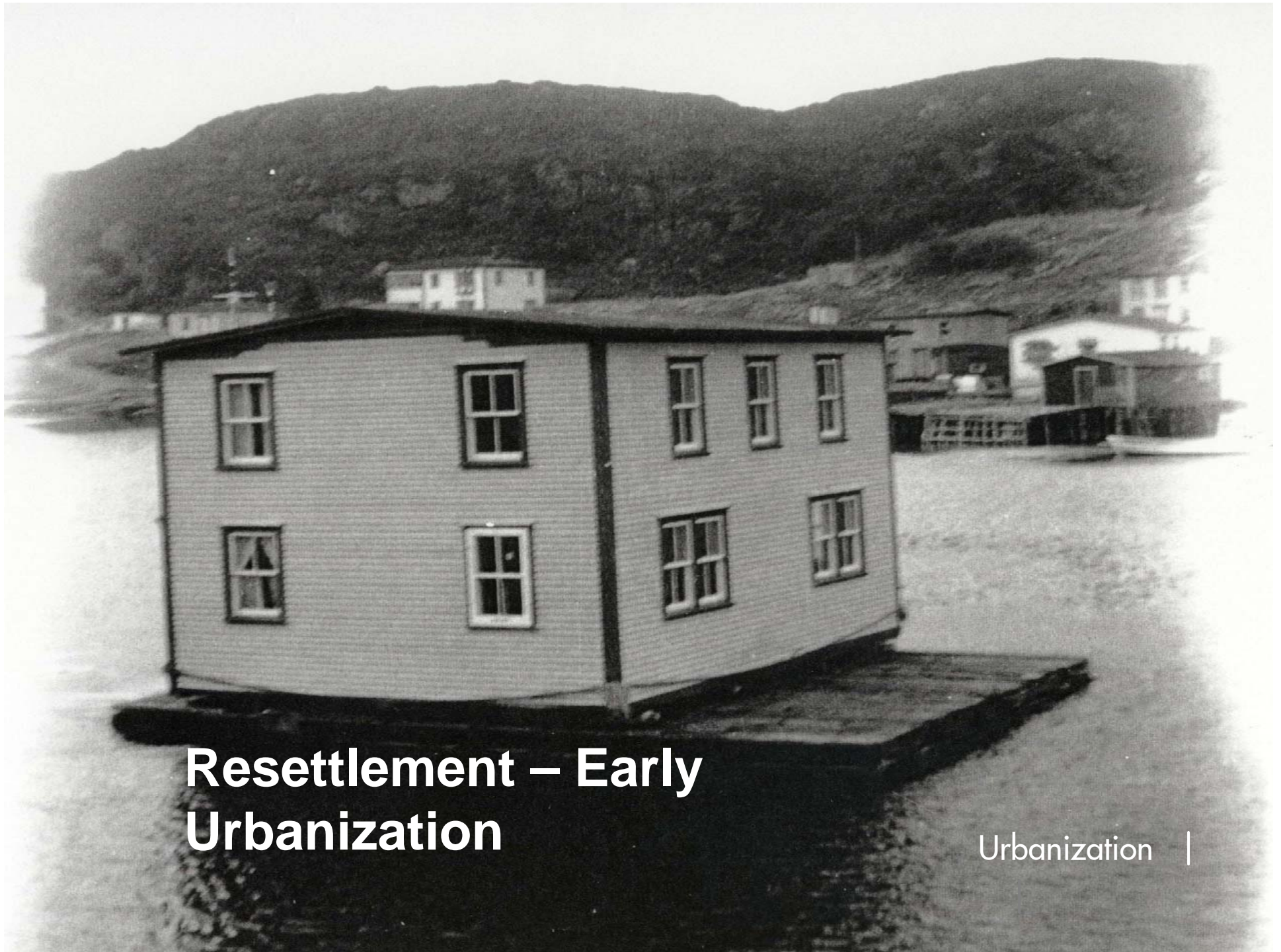
Urbanization from 1980 to 2030
(population in millions)



Slow growing

Rapid growing





Resettlement – Early Urbanization

Urbanization |

Its not an Atlantic Canada
only problem

Population in Millions

2012

2036

0.2 0.3

Thunder Bay

0.6 0.6

Sudbury

1.8

2.2

Ottawa

12.5

1.6

1.8

Hamilton

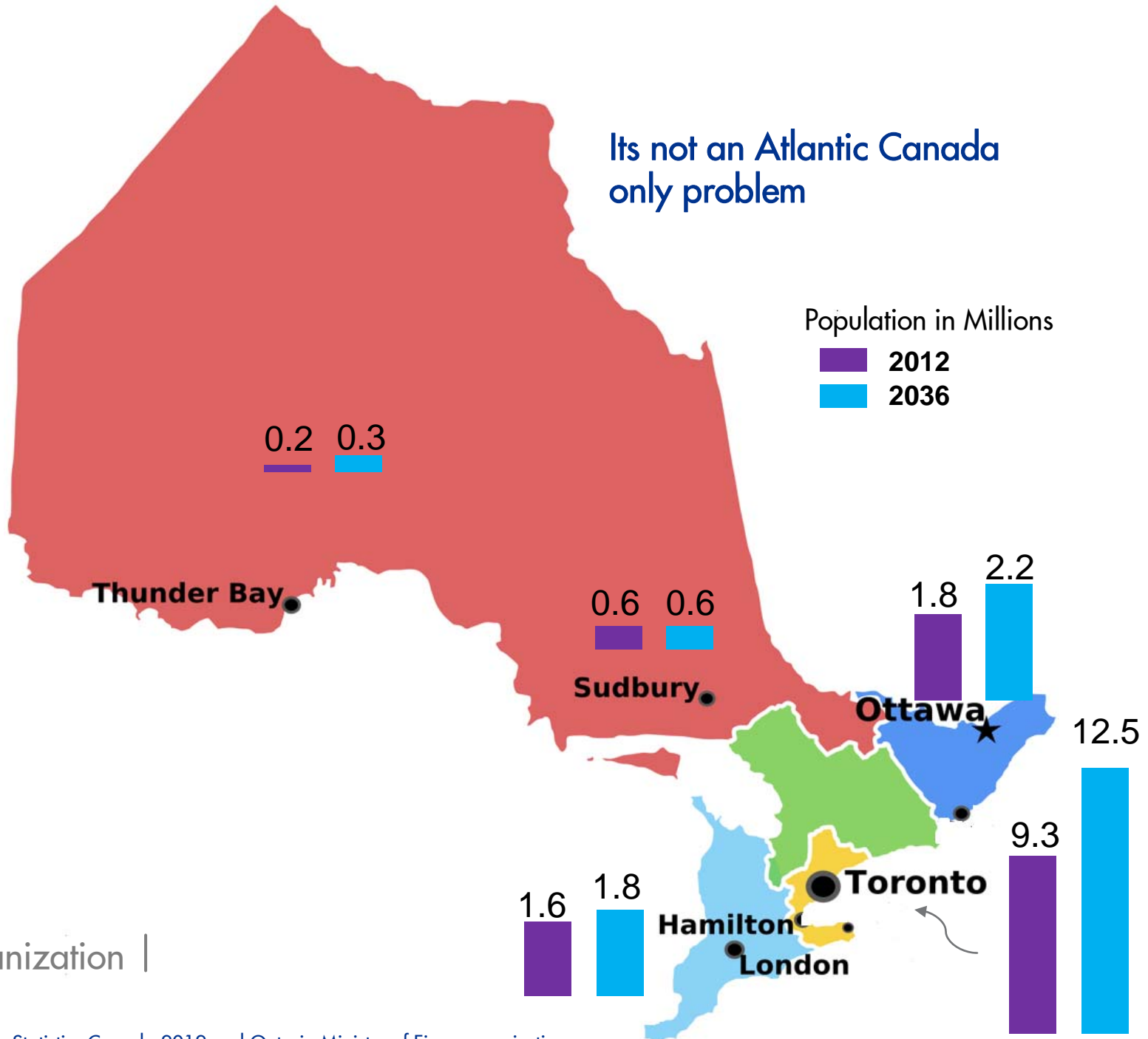
London

Toronto

9.3

Urbanization |

Sources: Statistics Canada 2012 and Ontario Ministry of Finance projections



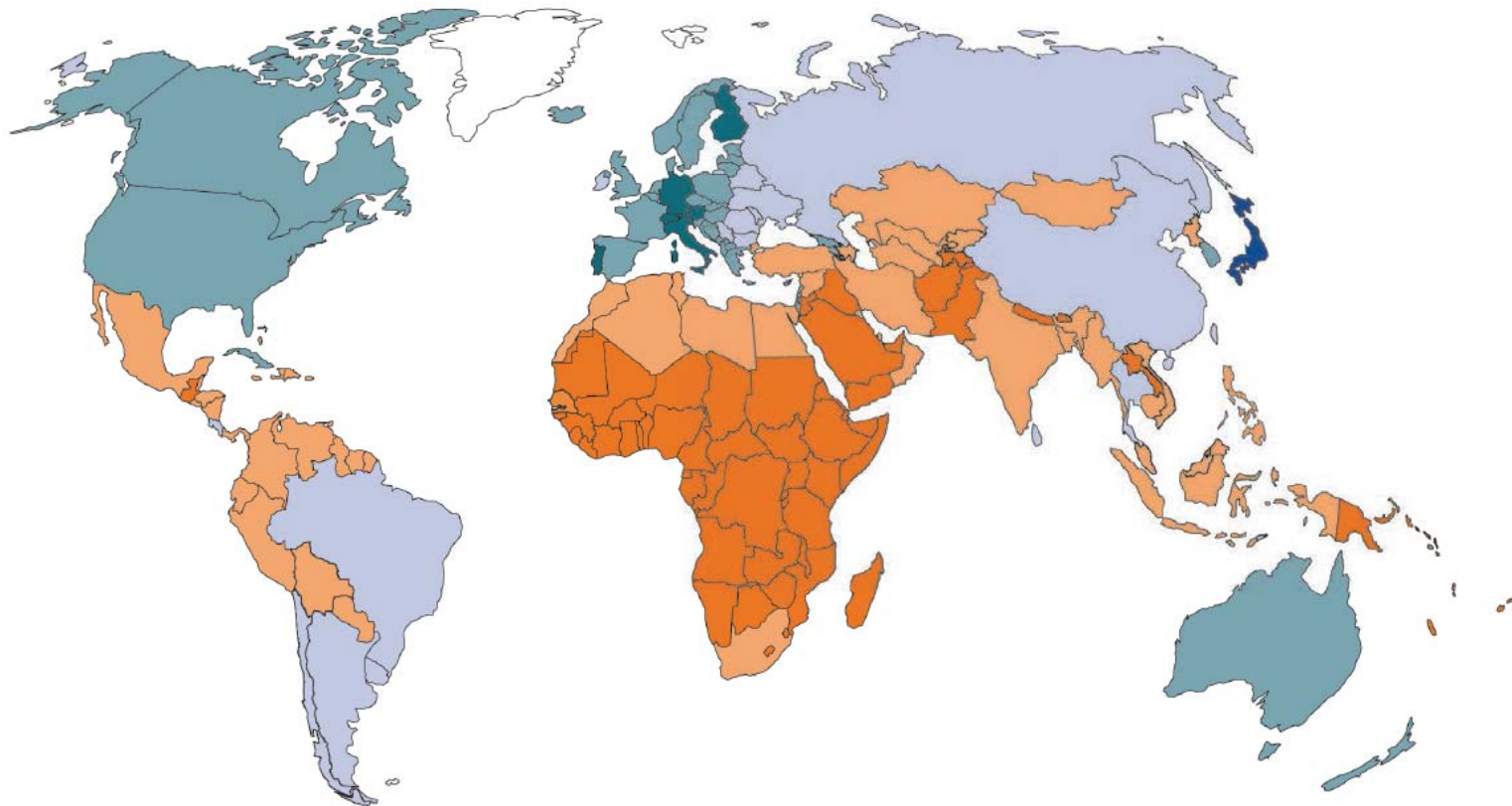
A photograph of an elderly man with glasses, wearing a white t-shirt and red shorts, in the middle of a volleyball game. He is reaching out with his right hand towards a large white volleyball that has the letters 'FED' on it. The background is a blurred indoor sports hall with wooden floors and ceiling lights. The word 'Demographics' is written in the top left corner.

Demographics

By 2030, the number of people over 65
will double to 1 billion globally

Old-age dependency ratio in 2030¹⁴

Ratio of population aged 65+
per 100 population aged 15-64

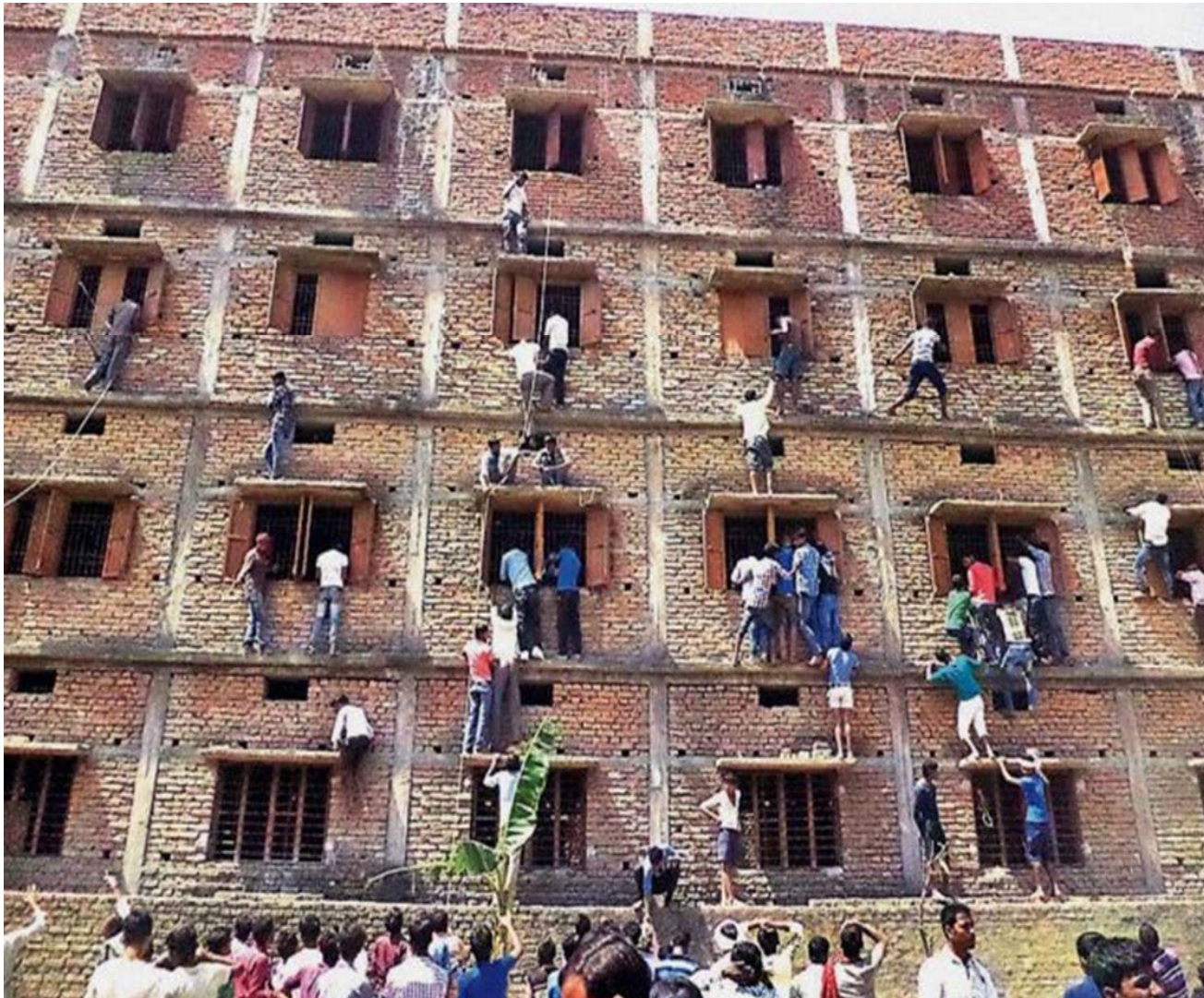


Demographics

Globally, 15-24-year-olds make up **40%** of the total unemployed population.¹⁰



Demographics

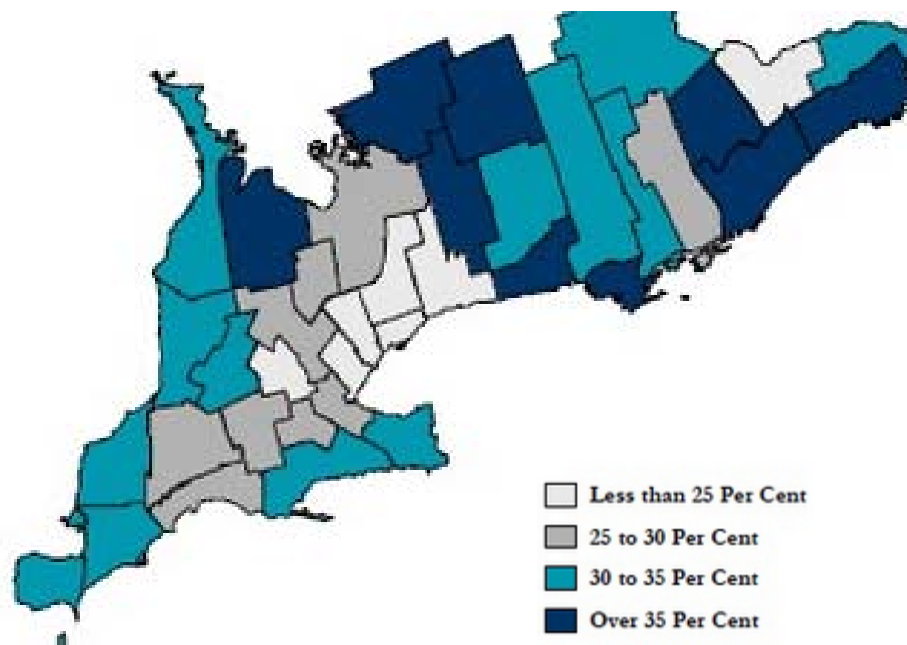


1 million young people in India will enter the labour force every month for the next 20 years.

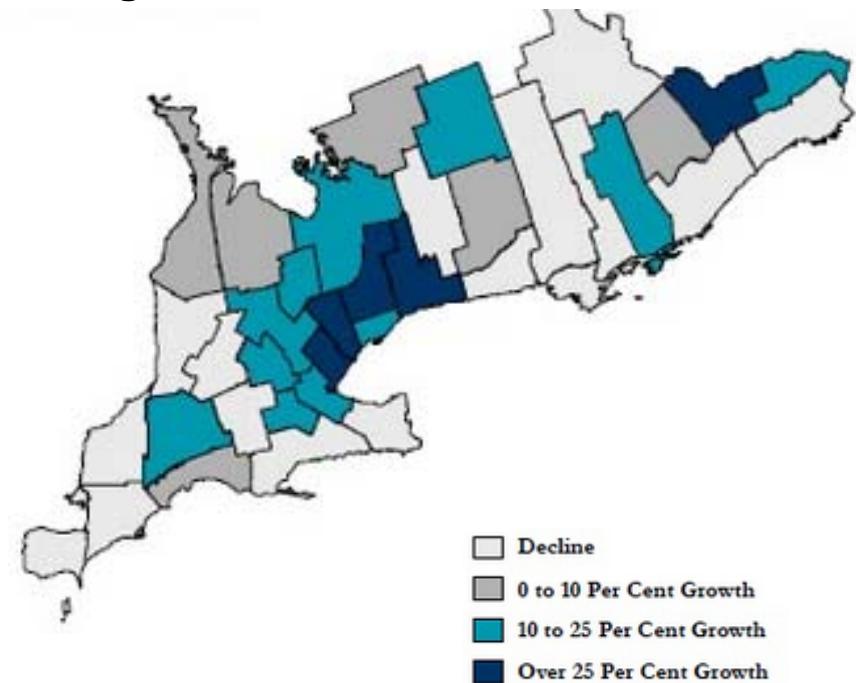
Demographics

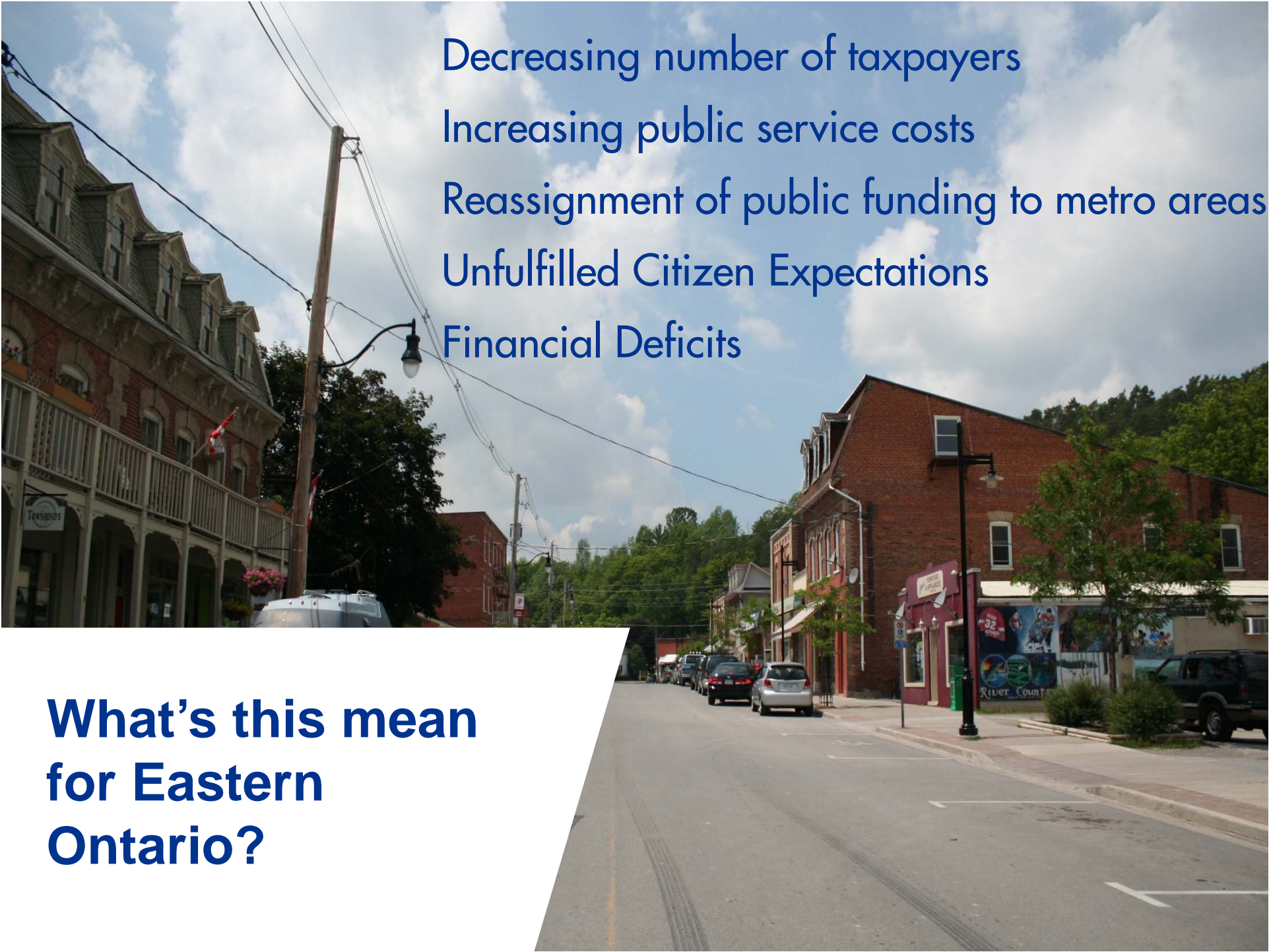
Difficult Demographic Trends

**Projected Share of Seniors
in Population in 2041**



**Growth/Decline in Number of Children
Aged 0-14, 2013-2041**





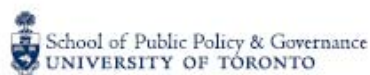
Decreasing number of taxpayers
Increasing public service costs
Reassignment of public funding to metro areas
Unfulfilled Citizen Expectations
Financial Deficits

**What's this mean
for Eastern
Ontario?**



Shifting Gears

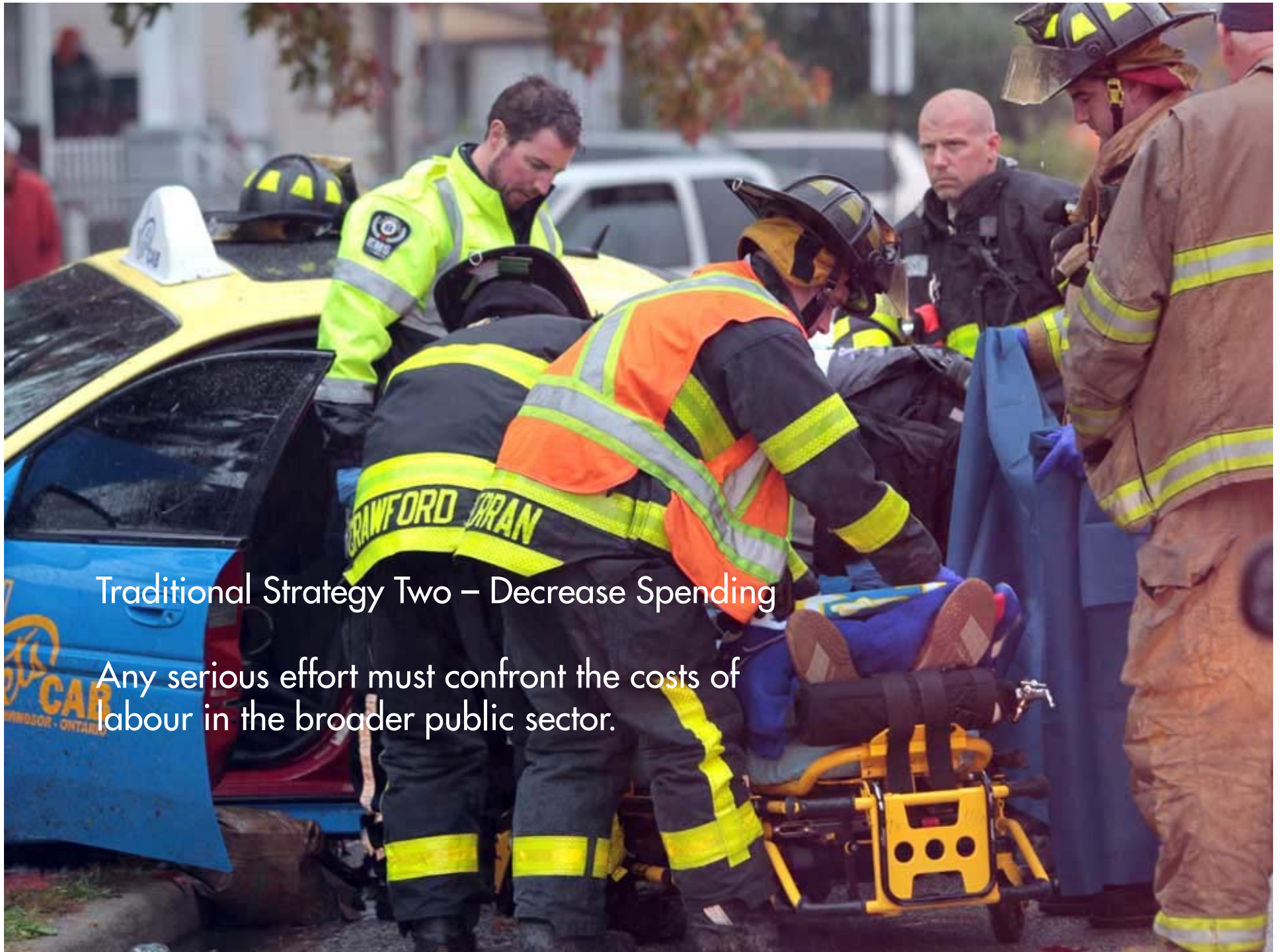
Paths to Fiscal Sustainability in Canada





Traditional Strategy 1: Increase Revenues

Governments must move to user fees based upon full-cost recovery models to fund public services.



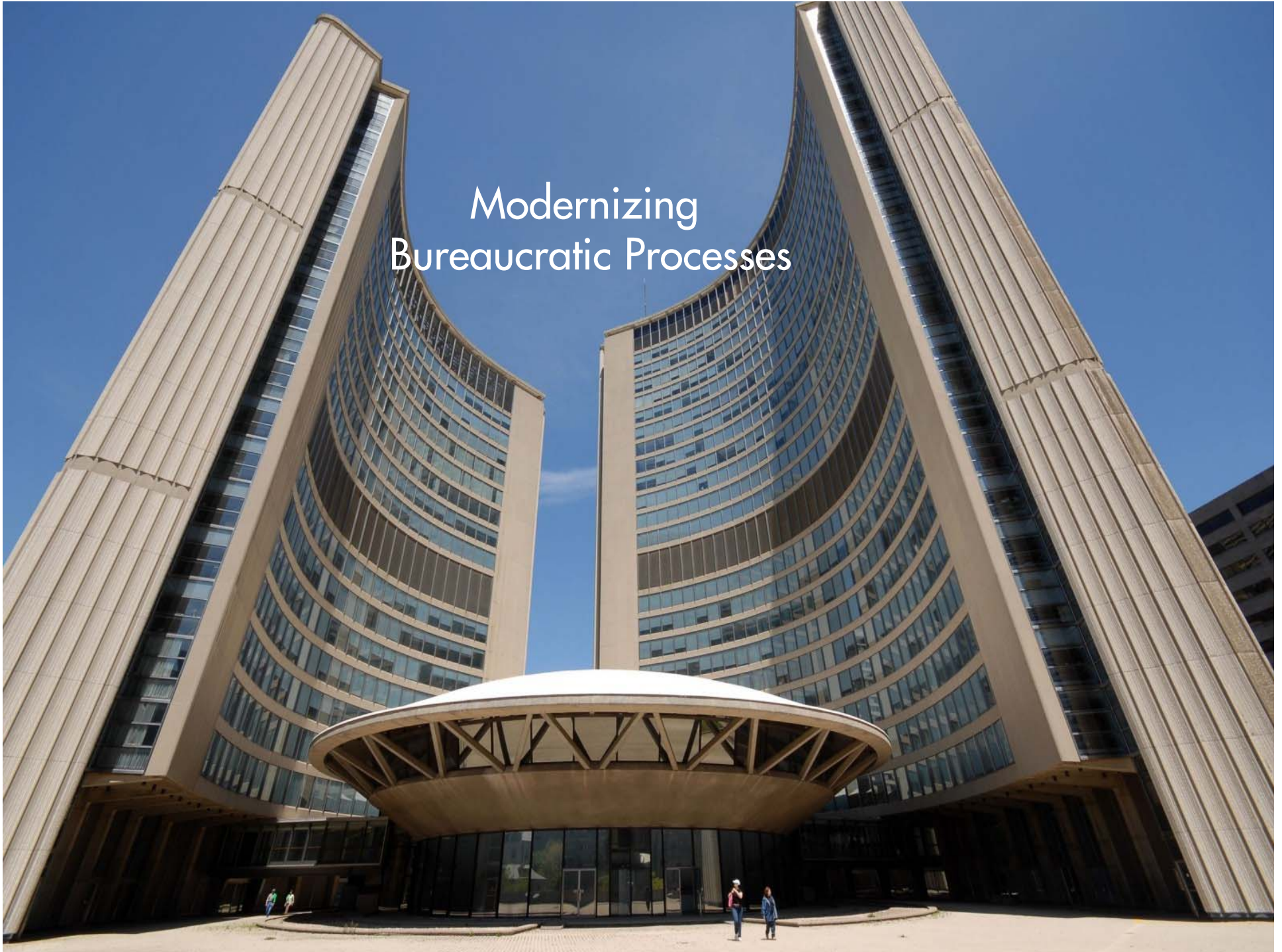
Traditional Strategy Two – Decrease Spending

Any serious effort must confront the costs of labour in the broader public sector.



Modernizing Bureaucratic Processes
Disentangling Government
Digitisation
Devolution
Alternate Financing

Modernizing Bureaucratic Processes





Disentangling Levels
of Government

A close-up photograph of a computer keyboard. The central focus is a blue key with the words "OPEN" in white and "DATA" in yellow. The key is surrounded by several white keys, which are slightly out of focus. The lighting is soft, highlighting the texture of the keys.

**OPEN
DATA**

Digitisation

Devolution




Alternate Financing



Few students of public administration believe that the footprint of government, how government is organized or its relationship with the public will look the same ten years from now as it does today.



A woman with short brown hair, wearing a dark grey long-sleeved top and dark trousers, stands in the center of a room with wood-paneled walls. She is holding a black microphone in her right hand and gesturing with her left hand. She is addressing a group of people seated in rows of chairs. The audience members are diverse in age and ethnicity, some looking towards the speaker and others looking down at papers or laptops. The room has two "EXIT" signs on the wall, one on the left and one in the center above a doorway. A black speaker is mounted on a stand to the right of the speaker. The lighting is warm and focused on the speaker.

**Eliminating a sizable deficit is a
'societal project,' not a normal
budget exercise**

**- Honourable Jocelyn Bourgon,
Former Clerk of the Privy Council**



KEEP CALM

The presentation is over

AND

Any

Questions???



cutting through complexity

Bruce Peever
Senior Manager
Public Sector Advisory

bpeever@kpmg.ca

905-523-2224

KPMG CONFIDENTIAL

The information contained herein is of a general nature and is not intended to address the circumstances of any particular individual or entity. Although we endeavor to provide accurate and timely information, there can be no guarantee that such information is accurate as of the date it is received or that it will continue to be accurate in the future. No one should act on such information without appropriate professional advice after a thorough examination of the particular situation.

© 2015 KPMG LLP, a Canadian limited liability partnership and a member firm of the KPMG network of independent member firms affiliated with KPMG International Cooperative ("KPMG International"), a Swiss entity. All rights reserved.

The KPMG name, logo and "cutting through complexity" are registered trademarks or trademarks of KPMG International.