

ROB
voigt



Rob.Voigt@cambium-inc.com



[@robvoigt](https://twitter.com/robvoigt)



civicblogger.blogspot.com





ROB
voigt

planner, artist, blogger



WTF



Rethink how we do what we do!

**focus on the built environment,
it's influence on community health,
well being & economic development**

An aerial photograph of a park. A winding stone path leads through a lush green lawn. The path is composed of irregular, light-colored stones. The grass is vibrant green and appears well-maintained. The overall scene is peaceful and scenic.

COMMUNITY BUILDERS

are using planning strat

are forty years old an

BUILDERS

"we are using planning strategies that are forty years old and no longer relevant to today's culture... as if jobs were all downtown, as if land and energy were endless, and as if another lane on the freeway would end congestion."

Peter Calthorpe











**... the remedy for wounded and mutilated urbanism
is good urbanism --
good buildings, not just flowerbeds**

Howard Kunstler



... the remedy for wounded and mutilated urbanism
is good urbanism -
good buildings, not just flowerbeds
Howard Kunzler



Mac's



PROPANE

The Smart EXCHANGE

- Precision-Tested
- Safety Inspected
- Leak Tested
- Standardized Service Agreement
- 24-Hour Emergency Safe Value
- 100% Satisfaction Guarantee

REGULAR RENT \$22.99

MAC'S SPECIAL \$56.98

PROPANE EXCHANGE

WELCOME TO NATURE
NEIGHBOURHOOD

2

AMERICAN EAGLE OUTITTERS

WIRELESSWAVE



Chapeltown

MOTHER: Vicky aged eight in 1979 was allowed to walk to the swimming pool alone half a mile away.

ROTHERHAM

Grenoside

SON: Ed, now eight is only allowed to walk on his own to the end of his street (300 yards).

Concord Park

M1

Moorgate

SHEFFIELD

M1

Treeton

A630

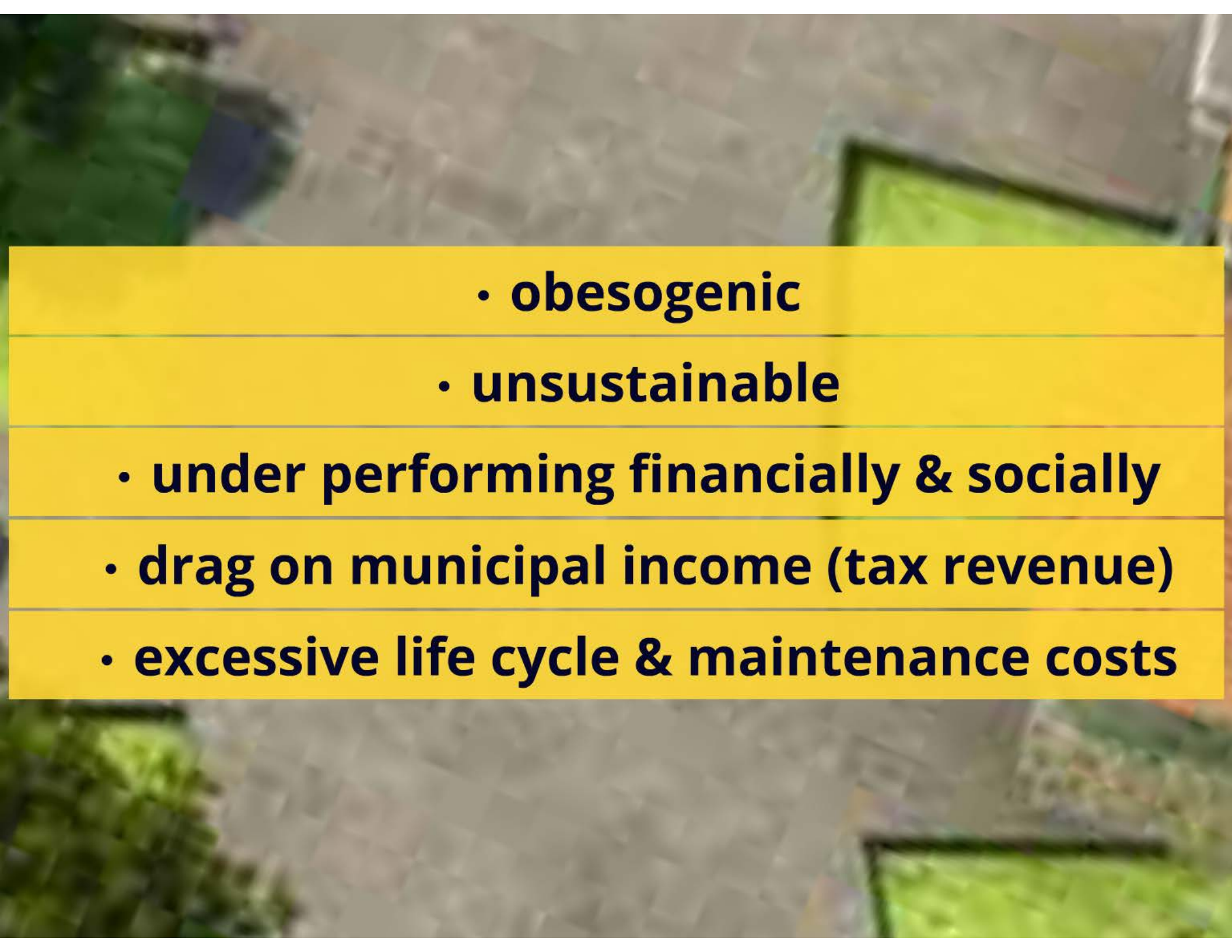
Orgreave

GRANDFATHER: Jack aged eight in 1950. Able to walk about one mile on his own to the woods.

GREAT-GRANDFATHER: George aged eight in 1919. Allowed to walk six miles to go fishing

Beighton

Rother Valley

- 
- **obesogenic**
 - **unsustainable**
 - **under performing financially & socially**
 - **drag on municipal income (tax revenue)**
 - **excessive life cycle & maintenance costs**

An aerial photograph of a brick-paved path or driveway. The path is made of reddish-brown bricks laid in a herringbone pattern. To the left of the path is a green lawn, and to the right is a dark, possibly paved area. The image is slightly blurred, giving it a soft, artistic feel.

**"the solution always lies inside
the problem, not outside"**

Marshall McLuhan

An aerial photograph of a park. A winding brick path, made of reddish-brown bricks, cuts through a lush green lawn. The path starts from the bottom left and curves towards the top right. The grass is a vibrant green, and the path is well-defined. The overall scene is peaceful and natural.

Active Transportation &
contact with nature are not problems to fix.

They are the solution to the problems that we need to
solve.



DESIGN
is
PEOPLE

A photograph of a yellow car on a road, with a yellow rectangular overlay containing text. The car is in the lower right, and the text is on the left. The background shows a road and some greenery.

Communicate

Learn

Engage

Assist

Respect

Specific examples from our "toolbox"

- improve citizen engagement**
- streamline development review**
- improve development quality**
- create efficiencies for staff resources**
- reduce infrastructure costs**
- improve community health...**

The background of the slide is a photograph of a paved road with a white center line, flanked by green trees and grass. A yellow rectangular box is superimposed over the middle of the image.

Communicate





Clear, concise, creative



xtrnormal

Clear, concise, creative

Pictures not words





Change your perspective











Learn



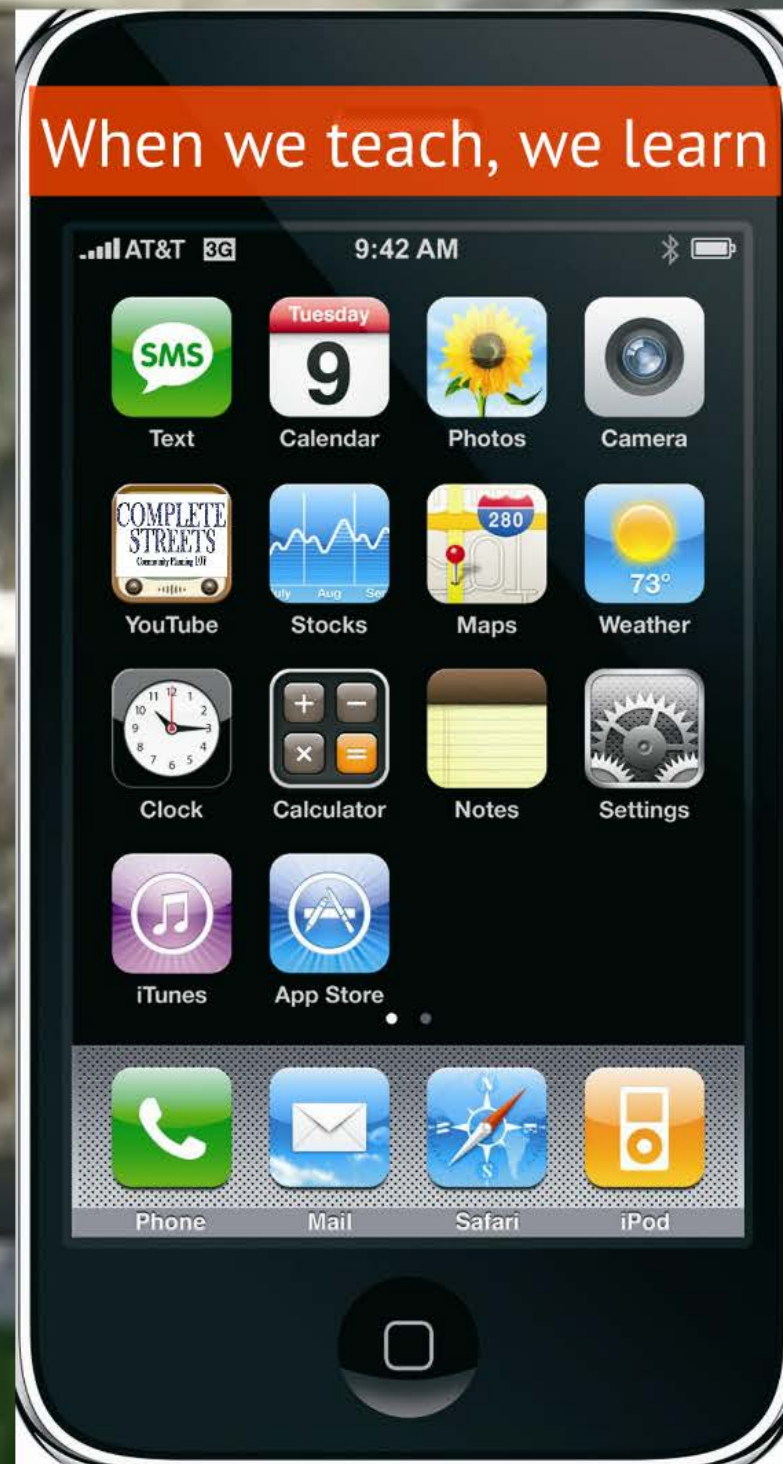
Har

Hands-on and interactive





When we teach, we learn



COMPLETE STREETS

Community Planning 101

"keep your boots muddy"
Bo Ladin



An aerial, high-angle photograph of a city street. In the center, a lush garden with green plants and bright red flowers is situated between buildings. Two people are standing near the garden. The surrounding urban environment, including buildings and streets, is visible in a blurred, high-angle perspective.

Engage





Must go beyond informing



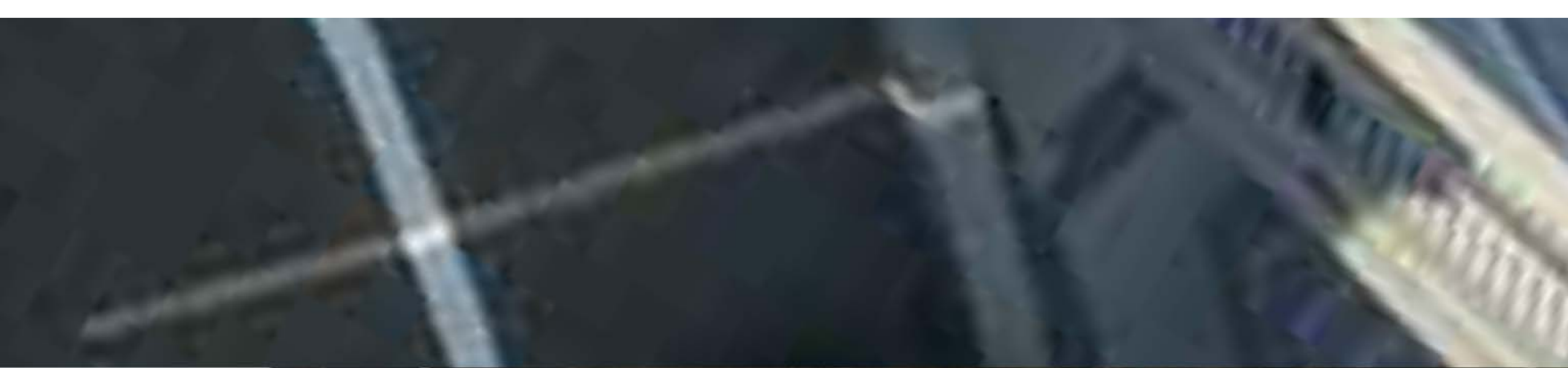
Work with children and youth

Child

Collaborate & have fun

Collaborate & have fun









An aerial, slightly tilted view of a city street. A large yellow banner is superimposed across the middle of the image. The banner contains the word "Assist" in a bold, dark blue font. Below the banner, a small rectangular inset shows a street-level view of a road with orange traffic cones and a person in a safety vest.

Assist



Urban acupuncture

Municipal World

CANADA'S MUNICIPAL MAGAZINE SINCE 1891

MARCH 2013

Exploring the future of nature and urbanism

Toronto's Celebration Park

www.municipalworld.com

ALSO INSIDE:

**Reducing basement
flood risk**

**Making better
infrastructure decisions
in a changing climate**

Design, build, monitor









Respect

3Cs
Context



3Cs Context Culture Community

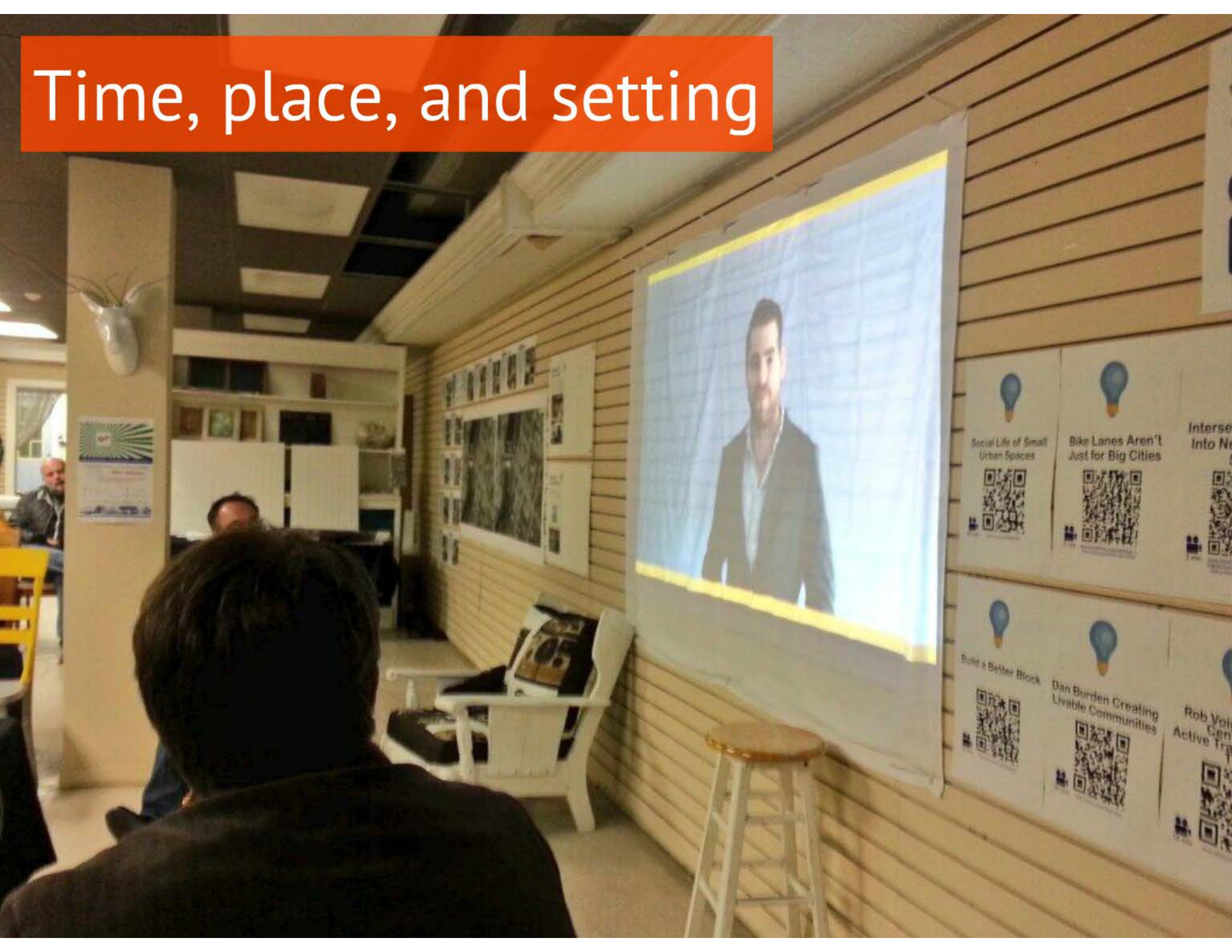




work in the neighbourhood



Time, place, and setting



RESULTS









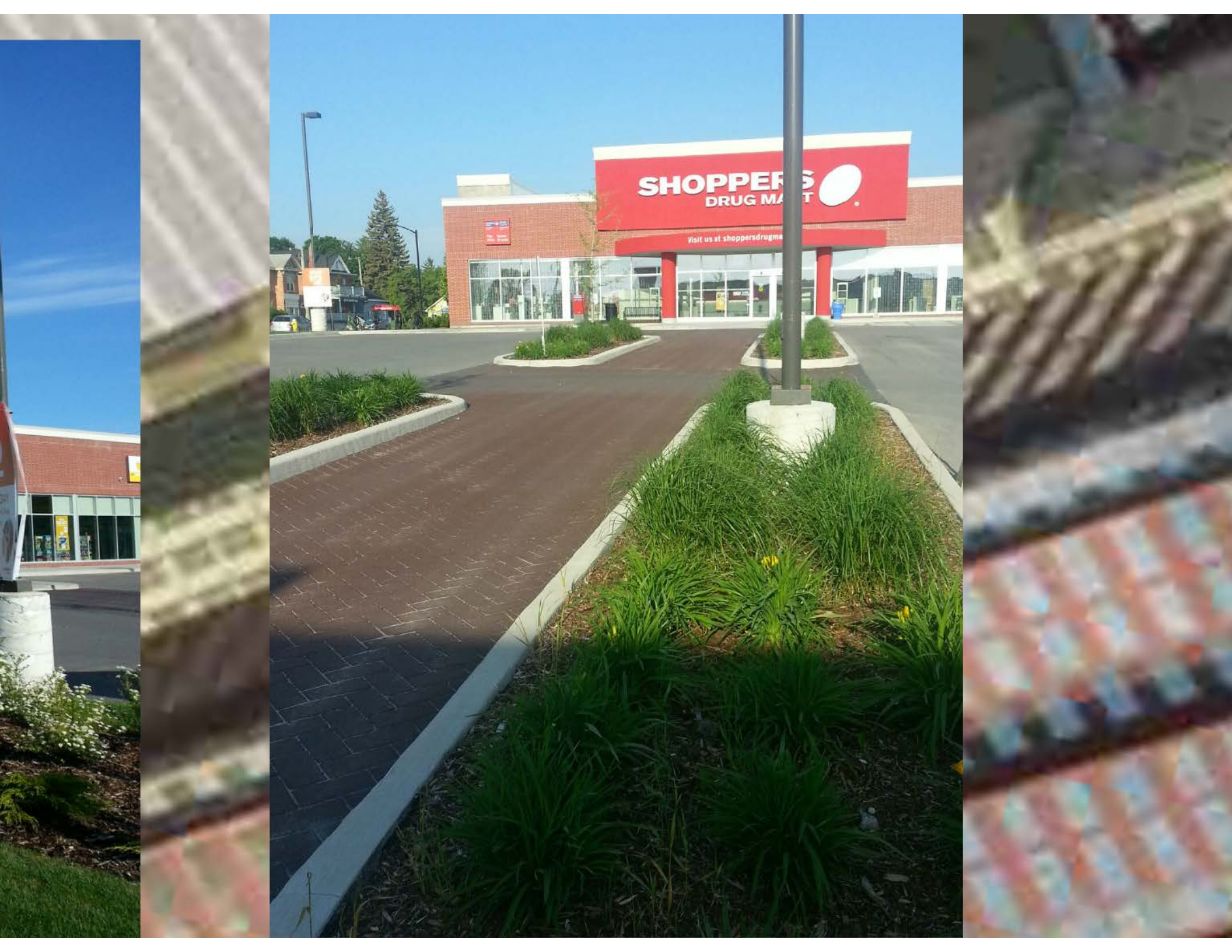


SHOPPERS
DRUG MART

SHOPPERS
DRUG MART

Visit us at shoppersdrugmart.ca

SAVE
\$2







Tremont Arts Festival

A Celebration of Art and Built Heritage

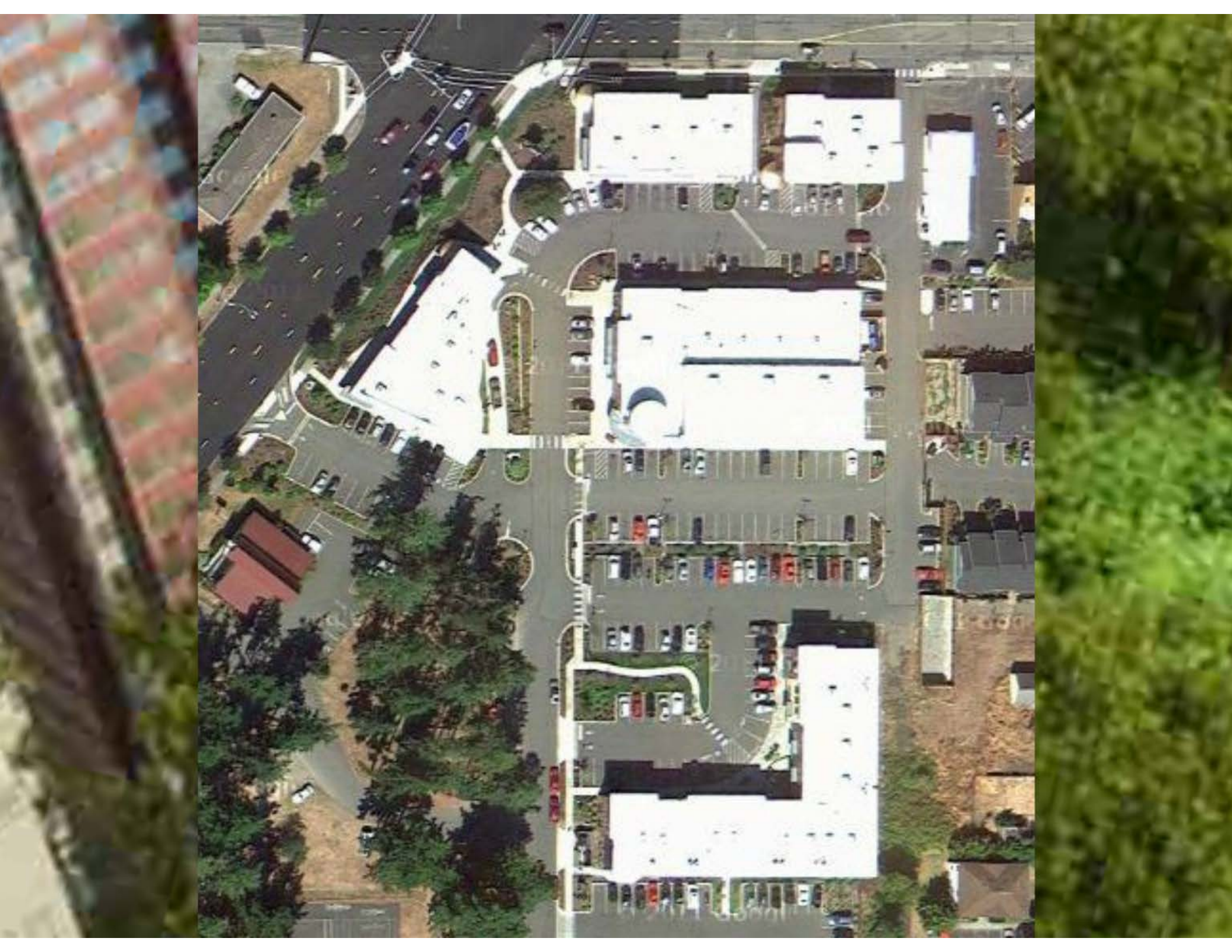
**Saturday
Sept 3rd
10 - 5**



**The Tremont Arts Festival and
The Georgian Bay Artisan Market**

**Live Music
Open Studios
Artist Demonstrations
Architectural Salvage & Antiques
Free Kids Activities
Prizes - Popcorn & Lots of Fun**









An aerial photograph of a dense, lush green forest serves as the background. A bright yellow rectangular box is centered on the image, containing a quote in bold black text. To the right of the yellow box, a vertical grey bar runs down the edge of the frame.

**"the solution always lies inside
the problem, not outside"**

Marshall McLuhan

Question of the day--

What can you do in your work
to help reintegrate **PLAY** in children's
lives?



Ifpra



Government
of Alberta



ASK THE RIGHT QUESTIONS

**How do we make our community
better?**

What is important to us?

How do we build on what we have?

**How do we build leaders in our
community?**

**How do we support neighbourhoods,
businesses, and families?**

How do we empower town staff?

**How do we become a creativity
catalyst?**



SO YOU GET THE RIGHT ANSWERS

DO WHAT'S RIGHT

- Better for Business**
- Improved Transportation**
- Lower Healthcare Costs**
- Lower Infrastructure Costs**
- Less Hospital Visits**
- Lower Insurance**
- Lower Vandalism**
- Higher Property Values**
- Better GDP return**
- Ecological Restoration**
- Happier Citizens**
- Healthier, smarter children**
- It's the right thing to do...**

**"The more I play,
the larger my world does become"**



xavier voigt 3yrs

ROB voigt



Rob.Voigt@cambium-inc.com



@robvoigt



civicblogger.blogspot.com



"The more I play
the larger my world does"

