



Building Sustainable Communities

Conservation Authorities and Municipalities Working Together for Success

Ontario East Municipal Conference
September 2016



CATARAQUI REGION
CONSERVATION AUTHORITY



SOUTH NATION
CONSERVATION
DE LA NATION SUD

Outline



- Overview of CA roles
- Municipal Partnerships
- Best practices
- Shared experiences



Healthy, Resilient and Sustainable Communities



What does it mean to you?

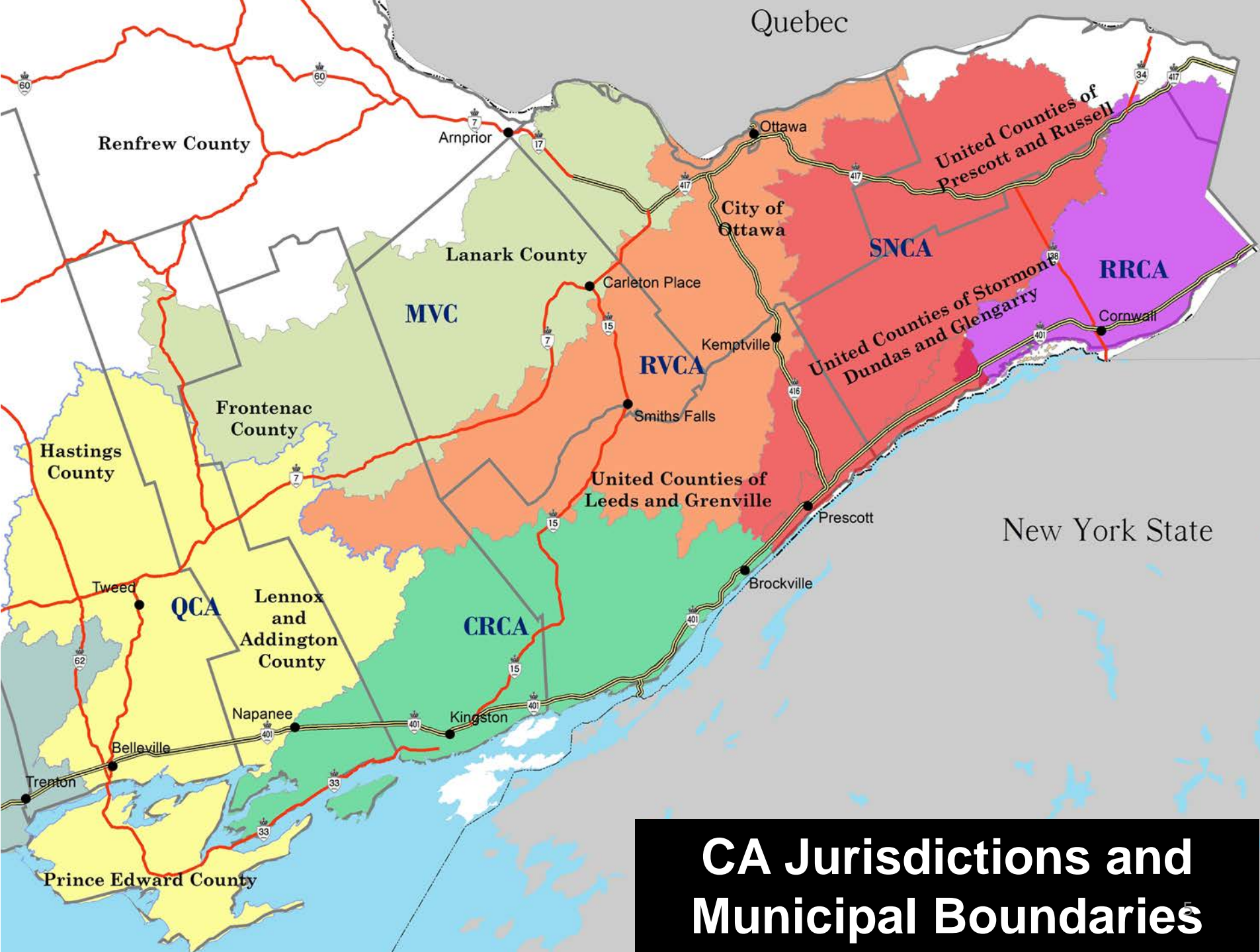
- Clean and safe physical environment
- Adequate access to food, water, shelter, income, safety, work and recreation for all
- Strong local cultural and spiritual heritage
- Diverse and vital economy
- Protection of the natural environment
- Responsible use of resources to ensure long term sustainability

Conservation Authorities Can Help



- Our mandate is to ensure the conservation, restoration and responsible management of Ontario's water, land and natural habitats through programs that balance human, environmental and economic needs





CA Jurisdictions and Municipal Boundaries

Approach

- Watershed perspective
- Cooperative, solutions-based approach
- Consultation
- Working together
- Finding practical solutions



Three Areas of Involvement



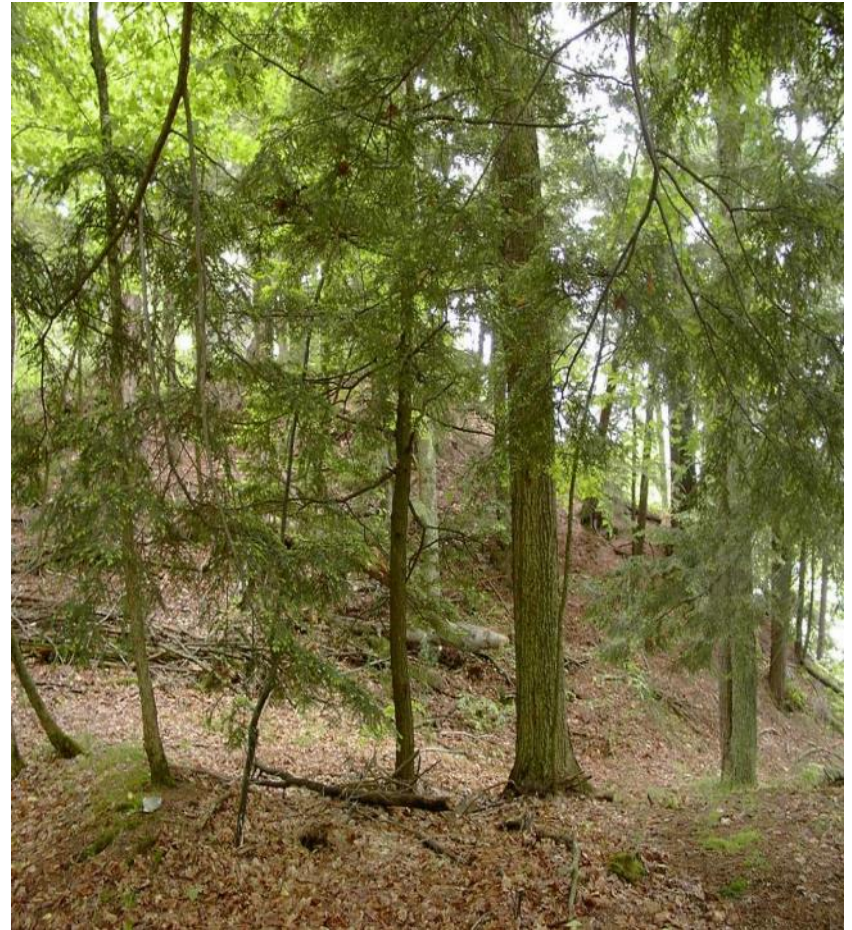
1. Municipal Plans and Policies
2. Development Review
3. Regulatory Permissions



Roles and Responsibilities



1. Delegated provincial interest
2. Public commenting body
3. Regulator
4. Service provider to municipalities
5. Resource management agency
6. Landowner



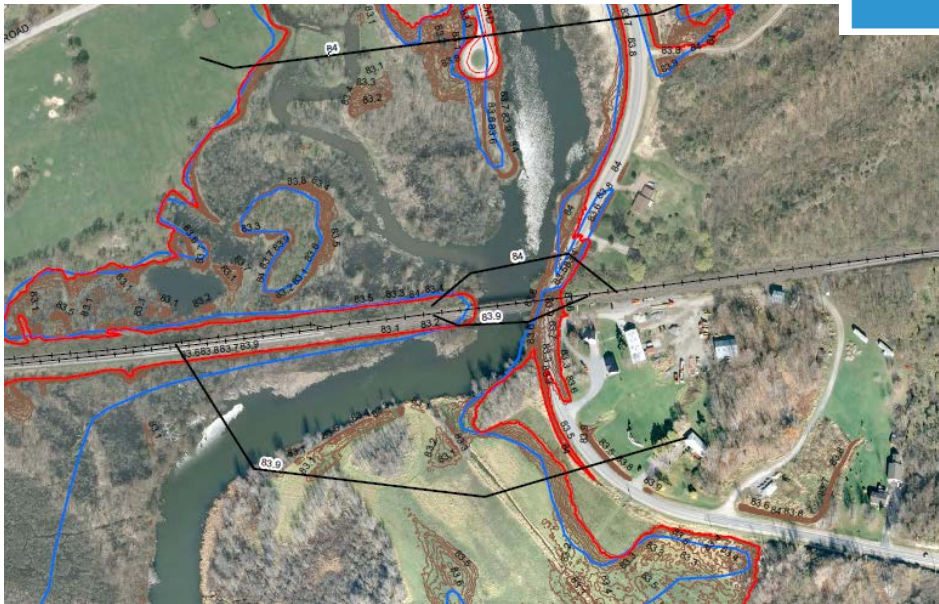
Municipal Plans and Policies



- Conservation Authorities help to inform the big picture through studies and knowledge
- Commonly associated with:
 - Natural hazards mapping
 - Natural heritage studies
 - Watershed monitoring and reports

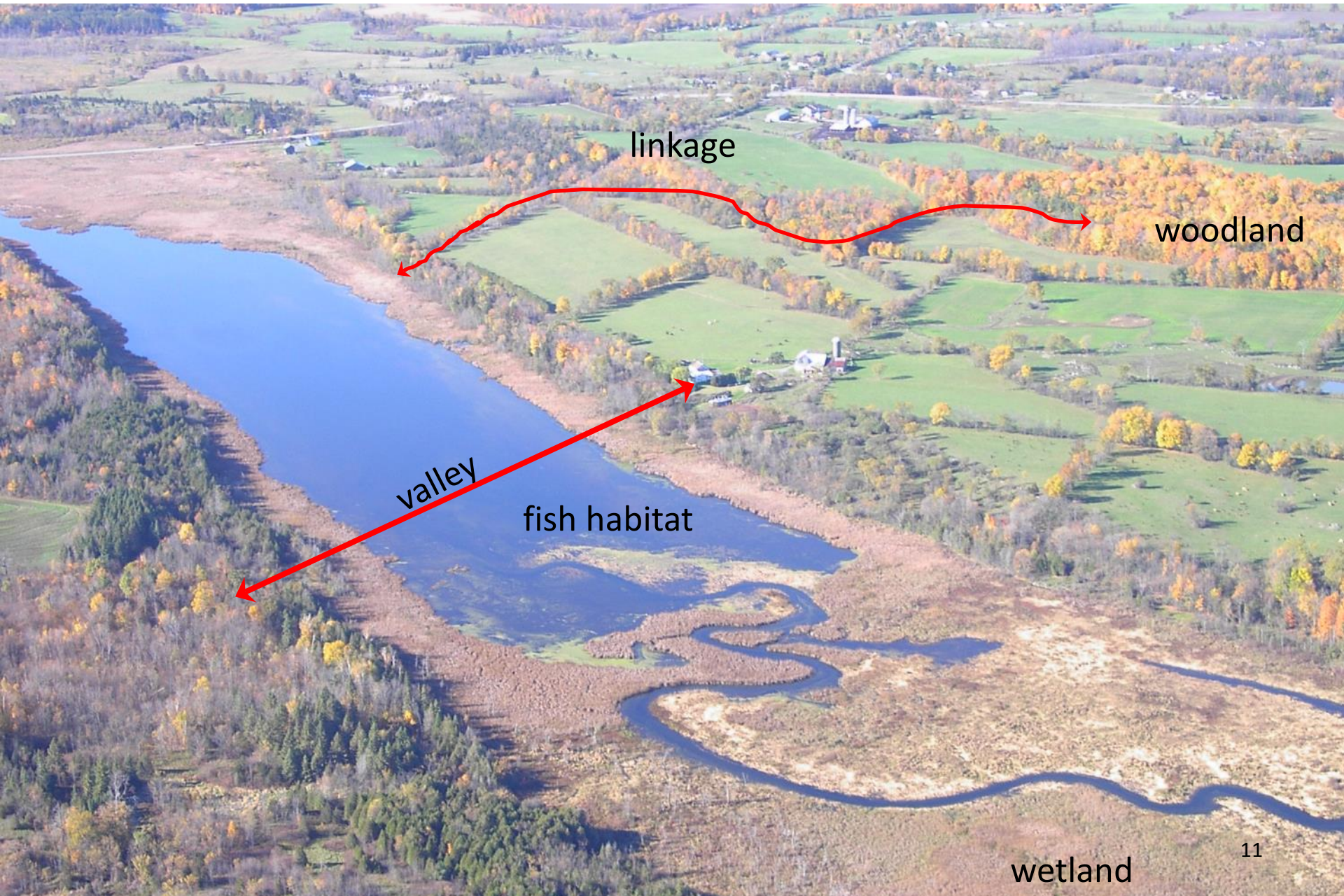


Floodplain Mapping



- Science-based modeling
- Improvements come from better GIS capabilities and better data
- Included in Official Plans and Zoning By-laws

Natural Heritage Studies



Land Cover Classification



What is it?

- vegetation types
 - forest
 - wetlands
 - agricultural crops or pasture
- non-vegetated surface
 - waterbodies
 - bedrock outcrops
 - settlements

Some useful applications:

- Agriculture Land Studies
- Parks and Open Space Planning
- Revise Official Plan and Zoning By-law Schedules

Legend

- Transportation
- Waterbodies
- Watercourses
- Wetlands
- Wooded_Area



Legend

2014 DRAPE Landcover

- Waterbody
- Transportation
- Coniferous
- Deciduous
- Wetland
- Pasture - Open Fields
- Planted Fields - Grass
- Bare Soil
- Urban
- Aggregates - Gravel



Watershed Monitoring and Reports



- Health status of watersheds
- Measure environmental change
- Better target programs
- New to CRCA - Lake reports



Blue-green algae in Colonel By Lake

Development Review



- Big picture
- Finer details



Regulatory Permissions under s. 28 of Conservation Authorities Act



The purpose of the regulation is:

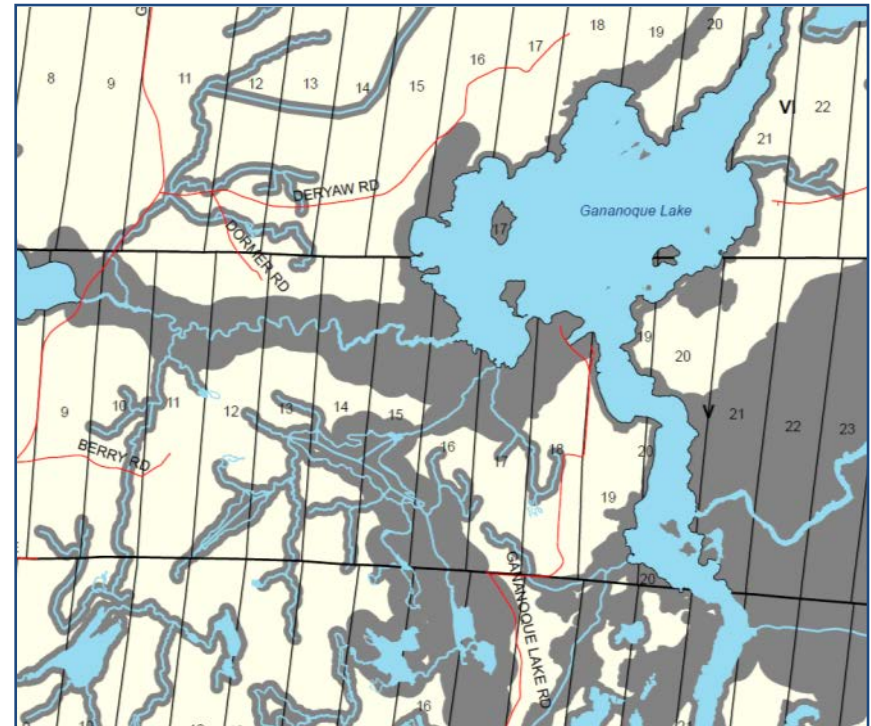
- to ensure that proposed changes to a property do not interfere with the natural features and ecological functions of **wetlands**,
- that they are not affected by **natural hazards**, such as flooding and erosion, and
- that these changes do not put people or property at greater risk from these hazards.




Regulatory Permissions



- Screening maps for municipalities
- Pre-application consultation
- Board-approved implementation guidelines for consistency



 General Regulated Area



Municipal Partnership Showcase



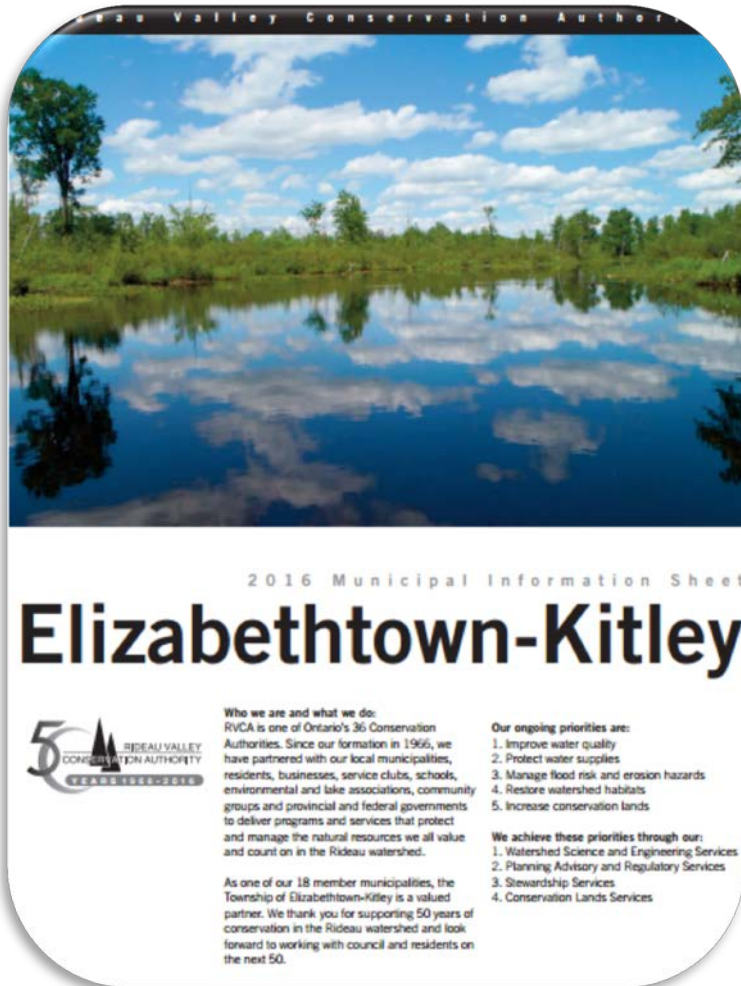
Education & Outreach

Municipal Information Day



- Annual Information Session
- February-March timing
- Discuss success and challenges of prior year
- Highlight work plan
- Showcase best practises
- 50 + in attendance each year

Municipal Communication



- Information for Council and residents
- Build engagement
- Highlight work plan
- Showcase best practises

Extended Service Hours



- Similar to private business
- Customer focused
- Municipal idea
- Serves residents and contractors
- May to October
- Flex-time

Municipal Partnerships



- Planning staff work from Municipal offices weekly
 - Example: City of Ottawa, and any other as requested
- Increases partnerships between CAs and municipalities
- Early identification of challenging files

CA Partnerships



- MVCA, RVCA, and SNC have a joint planning service in the City of Ottawa “The CA Partners”
- Shared letterhead
- Quarterly meetings with all 3 CAs servicing the City and City staff

CA Partnerships



- **Site Evaluation Guidelines**
- MVCA, RVCA, and CRCA commissioned a guideline review
- Evaluation tool will benefit both the municipalities and the CAs

CA Partnerships



- **Rideau Waterfront Development Review Team (RWDRT)**
- RVCA, CRCA, and Rideau Canal Office of Parks Canada
- One stop planning and regulatory advice to approval authorities



Development Review

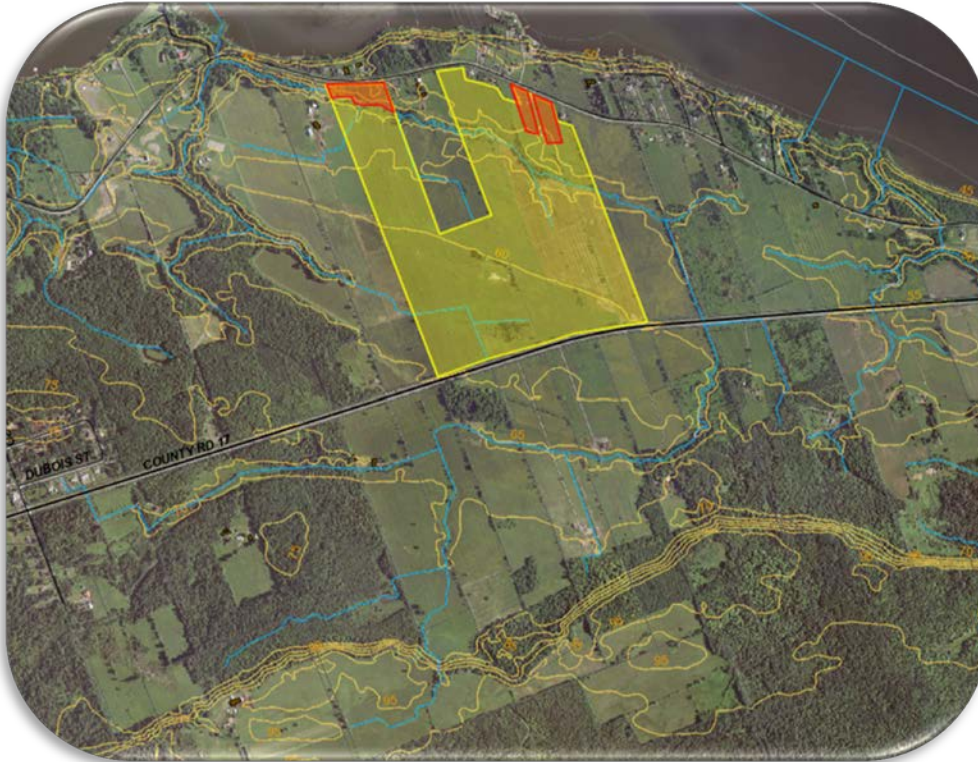
Studies for Municipalities



- ***Integrated Reviews***
- Septic review together with hydrogeological review
- Saves time and money for the applicant
- Identifies permitting issues and challenges early on



Studies for Municipalities



- *Assessment of ambient groundwater for development potential*
- *UCPR; Clarence Rockland; Alfred Plantagenet; SNC; OGS*
- Driven by development pressures and concerns

Studies for Municipalities



Frank Kenny Road, Ottawa

- ***City of Ottawa
Floodplain Mapping***
- ***City of Ottawa; MVCA;
RVCA; SNC***
- Multi-year agreement
- Capacity building
- Positioned for new funding

Studies for Municipalities



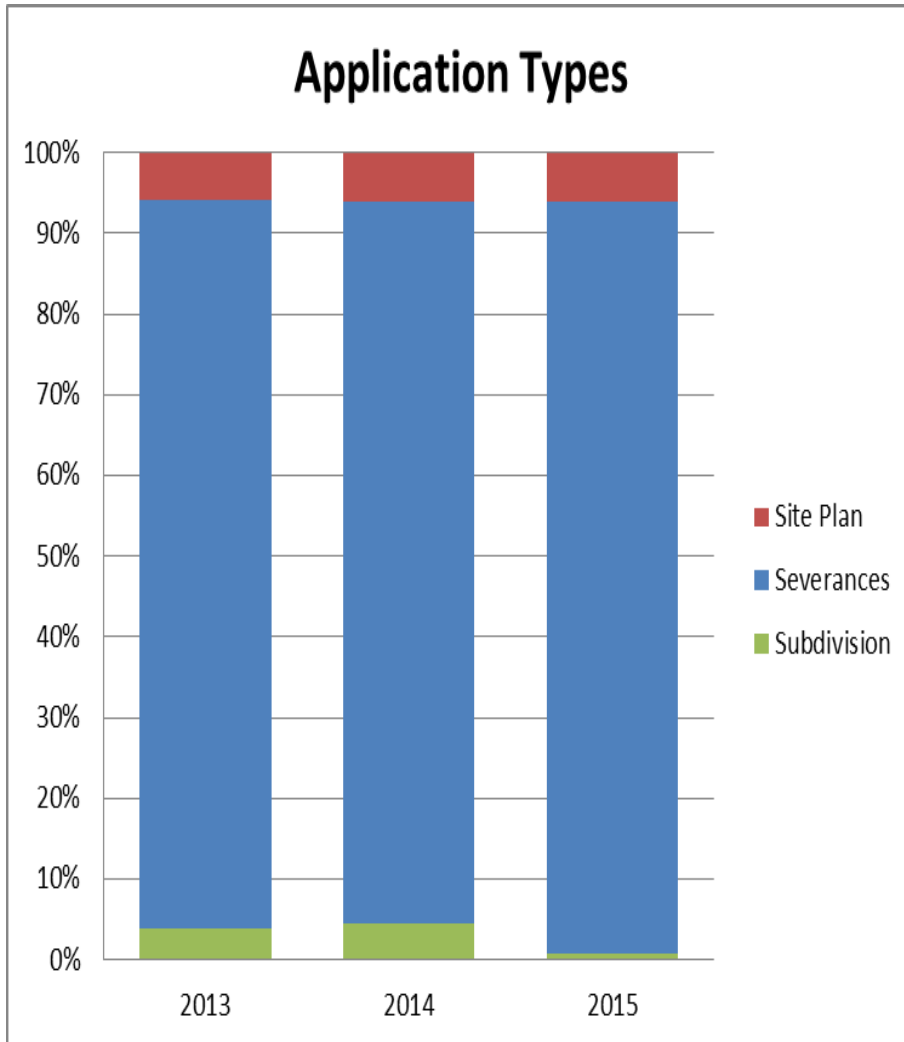
- *Environmental Project Management for the Port of Johnstown*
- *Edwardsburgh/Cardinal Port of Johnstown*
- Complex inter-agency review
- Multi-year project
- Full cost recovery

Integrated Planning



- Development Agreements (Findlay Creek Partnership and Committee)
- Buffer Tree Plantings
- Scoped Environmental Impact Assessment

Integrated Planning



- Development Review Teams & pre-consultation
- Application Type

Responsive Regulations



Development Applications and CA Partners



- Strong partnership on severance and subdivision files
- CA training for Municipal staff
- Pre-screening for key environmental features
- Source Protection, wetlands, floodplain, septic program

Process Improvements



- Collection of CA fees upfront
- Efficient internal process at the CA
- Successfully improved timelines for applicants
- Local municipality and CA communication on development conditions and agreements

Stormwater Management Project



- Working Group with CAs and local Municipalities
- Stormwater Management Plan
- Improve service for applicants
- CA expertise and value-add partnership



Contacts

Christine Woods
Resource Planner
Phone: 613-546-4228
E-mail: cwoods@crca.ca
www.crc.ca

Angela Coleman
Director of Property and Approvals
Phone: 613-984-2948
E-mail: acoleman@nation.on.ca
www.nation.on.ca

Alison McDonald
Manager of Planning
Phone: 613-932-1515
E-mail: amcdonald@sdgcounties.ca
www.sdgcounties.ca

