

# District Energy – A Solution for Burlington?

Ontario Eastern Municipal Conference  
September 15<sup>th</sup>, 2016

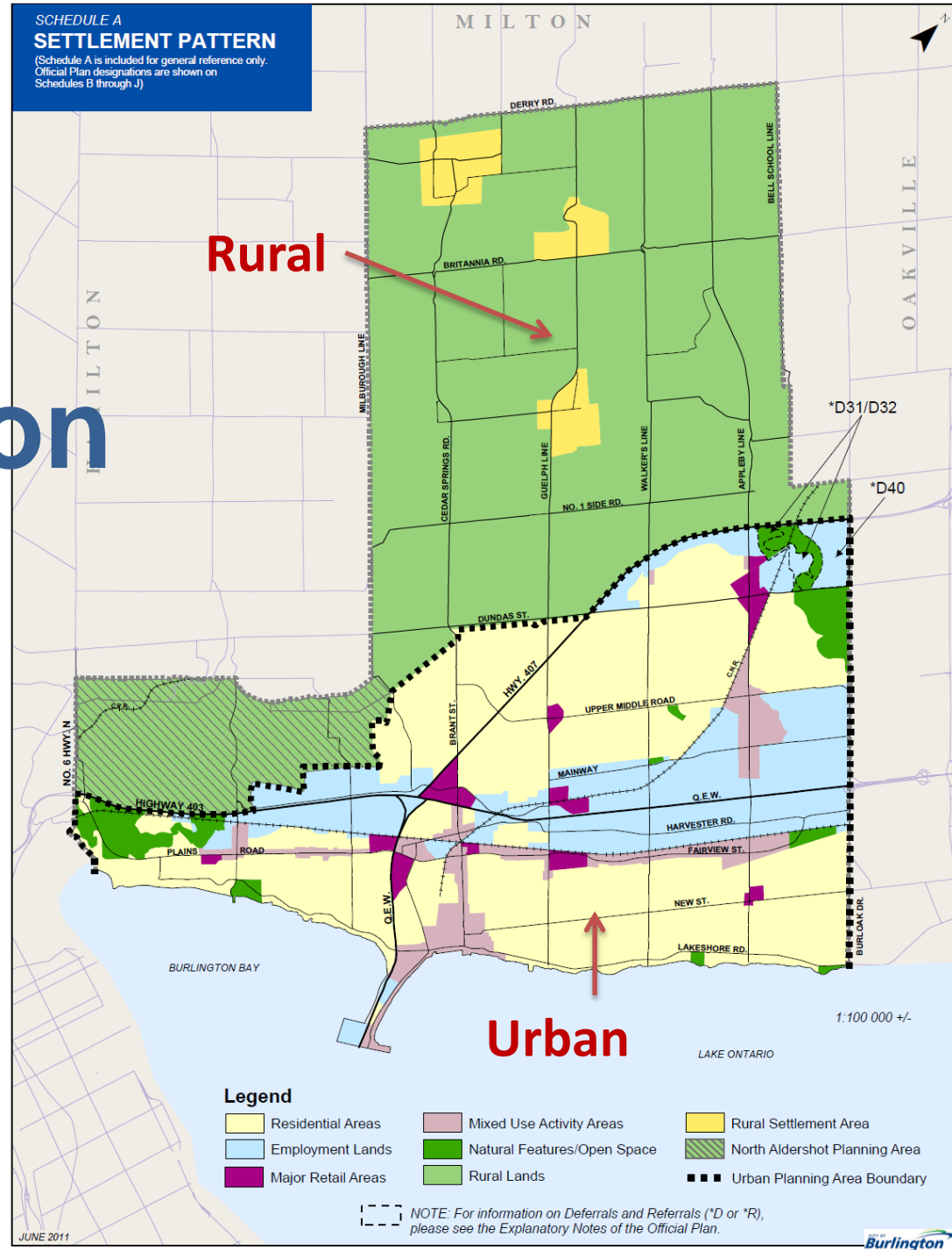
Lynn Robichaud  
Sr. Sustainability  
Coordinator  
City of Burlington



# Burlington

## SCHEDULE A SETTLEMENT PATTERN

(Schedule A is included for general reference only.  
Official Plan designations are shown on  
Schedules B through J)











# Presentation Outline

## District Energy?

- Background - CEP
- Why?
- How?
- Challenges
- Lessons learned
- Support networks
- Next steps



# Developing the CEP

## Steering Committee

City Staff + Burlington Hydro

## Stakeholder Advisory Committee

14 local agencies  
& organizations



Burlington **hydro** inc.



# Community Energy Plan Vision

Achieve a community that is  
**efficient** and **economically**  
**viable** in how it uses energy ....  
to **reduce its reliance** on the use of  
**energy**, reduce its **carbon footprint** and  
improve **local energy security**.

**Community  
Energy Plan**  
January 2014



# Goals



KEEP  
CALM  
AND  
SAVE  
ENERGY

- Behaviour Change & a Culture of Conservation
- Energy Efficiency
- Energy Generation & Security
- Land Use & Growth
- Transportation



# Integrated Community Planning

## Land Use, Transportation & Energy



We're Growing  
in Place [ Burlington's Official Plan Review ]





# CEP Priorities

- **District energy feasibility study**
- Community engagement & leveraging existing programs
- Retrofitting older buildings
- Complete community & integrated energy
- Complete streets



# Why District Energy?

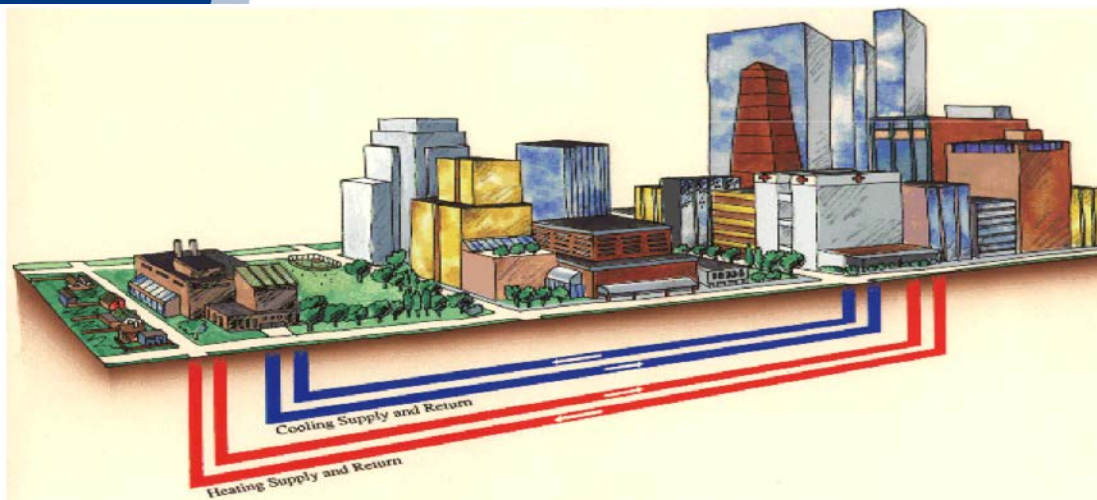
- Action in community energy plan
- Sustainability
- Resiliency
- Energy security
- Economy
- Inspiration from other jurisdictions
- Opportunity – Places to Grow - intensification



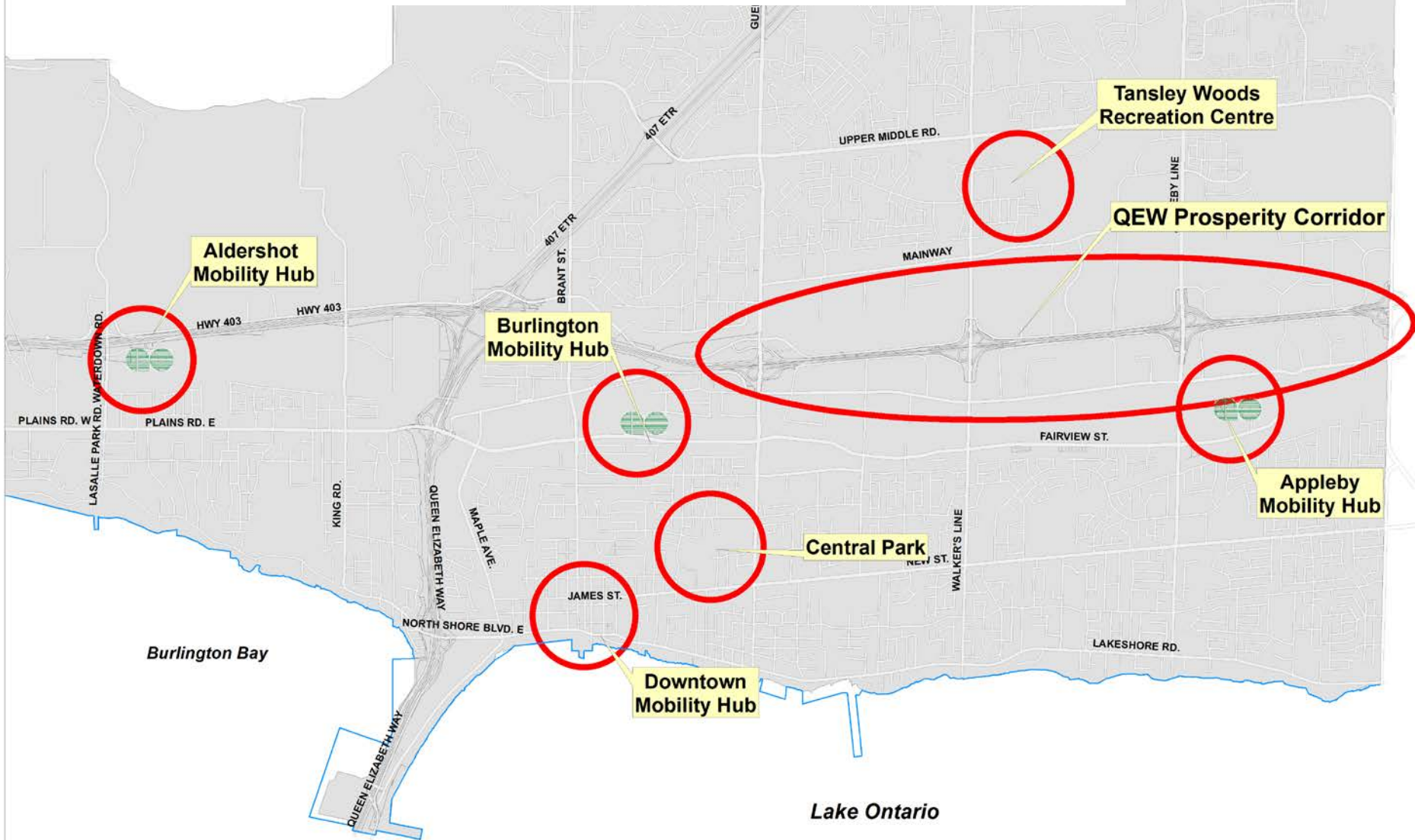


# Feasibility Study Process

- FCM Municipal Green Fund
- Study partners
- Research & education
- Request for proposals
- Two phases



# Burlington DE Options





# Study Challenges

- Gathering building and planning data
- Future growth trends
- Contacting building owners & developers
- Selling the project vs BAU



# Study Challenges Cont'd

- Cap and trade impact?
- Governance – who owns & operates?
- Capital funding
- Long term investment
- Time





# Lessons Learned

- Start small – what can you control?
- Hire a consultant with a planner
- Education
- Have a clear goal
- Research, research and more research
- Network, network, network



# Helpful Resources

- QUEST
- IDEA
- NRCan – Ken
- FCM - \$\$\$
- Other municipal DE systems (Markham, Hamilton...)



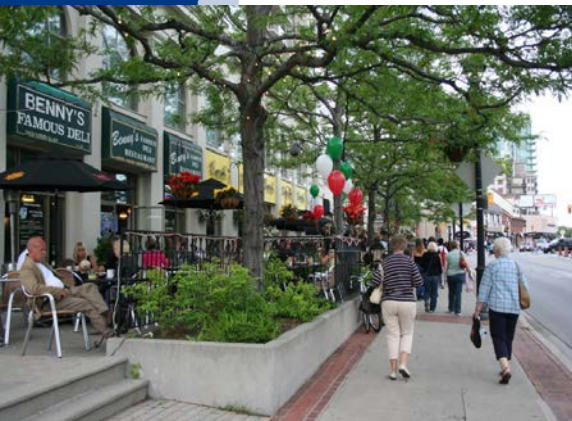
## 2015 IMPACT REPORT

ADVANCING SMART ENERGY  
COMMUNITIES IN CANADA

June 2016

# What do we need?

- Support from senior levels of government
- Open data
- Mentorship – other DE systems

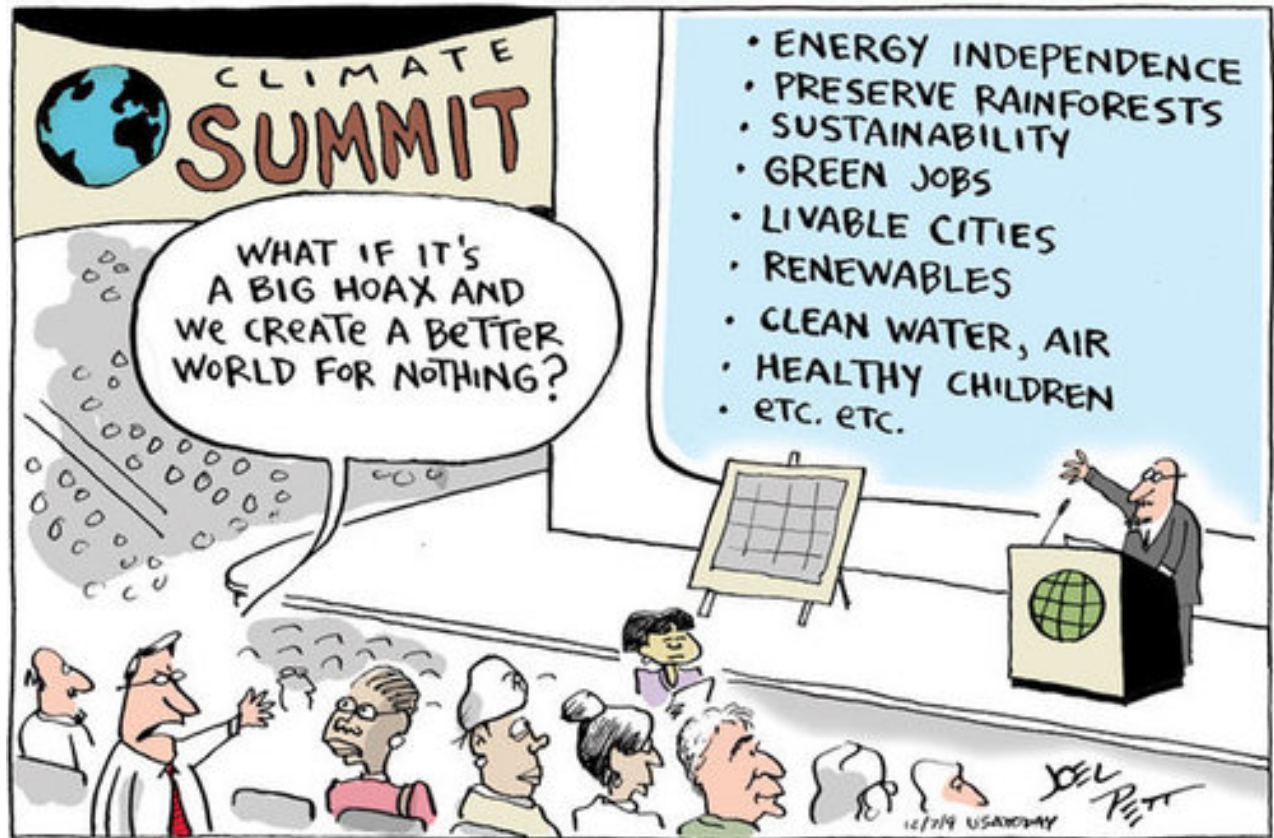




# Next Steps

- Continue meeting with stakeholders
- Workshop – Sept 20<sup>th</sup>
- MOUs
- Funding options
- Governance
- Report to Council – December 2016





Lynn Robichaud - Sr. Sustainability Coordinator

[lynn.robichaud@burlington.ca](mailto:lynn.robichaud@burlington.ca)

Capital Works

City of Burlington

[www.burlington.ca/CEP](http://www.burlington.ca/CEP)

[TakeActionBurlington.ca](http://TakeActionBurlington.ca)